

\$3.00



#112 Japanese Field Clothing

FOLKWEAR®
patterns with timeless style



Welcome to Folkwear!

If you're interested in expressing your creative style in the clothes you make and wear, you'll love Folkwear. These unique and enduring patterns will help you:

- ◆ make your own fashion statement by combining classic, historic, and ethnic styles with wonderful modern or vintage fabrics.
- ◆ design your own signature wearable art by adding your favorite embellishments and handcrafted techniques.
- ◆ create authentic reproductions of antique fashions and ethnic costumes for theater performance, historic reenactment, or everyday fun.

Since 1976, Folkwear has offered these unique features:

- ◆ full-size pattern pieces ready to trace or cut out.
- ◆ all sizes included in each multi-size pattern.
- ◆ easy-sew and special techniques clearly explained and illustrated.
- ◆ fascinating historical lore that sets the garment in its own time and place.
- ◆ instructions and suggestions for traditional embellishment details.
- ◆ instructions for knitted and crocheted accessories in some patterns.

Your creative spirit loves to interpret fashion in your own individual way. Let your imagination soar—with Folkwear!



Questions and Answers about Folkwear

Are Folkwear Patterns easy to sew?

Yes! The patterns range from very easy to advanced, with most falling into the easy-to-intermediate category. Nearly every pattern includes an easy-sew version. The authentic detailing and handwork is always optional, so you don't have to spend extra time to complete it unless you want to.

How are Folkwear Patterns sized?

Use the sizing chart on the pattern envelope to match your measurements to the correct size for that garment. **All sizes are included in one envelope, so you can easily combine them for a custom fit.** For example, on the pattern pieces with multiple cutting lines, you might use one cutting line in the bust and waist area, but gradually move over to the next cutting line for the hip area.

Many of the older Folkwear patterns are sized to a Misses 16, which is quite small these days. Gradually, we will go back and re-size the most popular old Folkwear patterns up to size 3XL (54" bust). Most patterns released since 1998 are sized according to the chart below.

How does Folkwear differ from other patterns?

Our styles are truly timeless and represent the fashions of other times and places. Each pattern embodies a tradition and tells a story. In many patterns, you will find fascinating historical lore and instructions for original handwork that you can optionally add to your garment.

How do you come up with new patterns?

We are always adding new ideas to our "New Pattern List" as Folkwear users like you make suggestions. We try to choose styles that will be interesting to sew, easy to adapt for many uses, a good "fit" with the rest of the Folkwear line, and just plain fun.

What about the knitting and crochet instructions in some Folkwear patterns?

In several patterns, you will find instructions for a coordinating garment or accessory designed especially for Folkwear. Specific yarns are recommended, but may not be available in your area. Therefore, we've included weight, yardage, and gauge information so you can choose other appropriate yarns.

equivalent to:	XSmall 6-8	Small 10-12	Medium 14-16	Large 18-20	XLarge 22-24	2XLarge 26-28	3XLarge 30-32	
Bust	30½ - 31½ 78 - 80	32½ - 34 83 - 87	36 - 38 92 - 97	40 - 42 102 - 107	44 - 46 112 - 117	48 - 50 122 - 127	52 - 54 132 - 135	in. cm
Waist	23 - 24 58 - 61	25 - 26½ 64 - 67	28 - 30 72 - 77	32 - 34 82 - 87	37 - 39 92 - 97	42 - 44 102 - 107	46½ - 49 118 - 124.5	in. cm
Hip	32½ - 33½ 83 - 86	34½ - 36 89 - 94	38 - 40 97 - 102	42 - 44 107 - 112	46 - 48 117 - 122	50 - 52 127 - 132	54 - 56 135 - 142	in. cm
Back Waist Length	15½ - 15¾ 39.5 - 40	16 - 16¼ 40.5 - 41.5	16½ - 16¾ 42 - 42.5	17 - 17¼ 43 - 44	17½ - 17¾ 44.5 - 45	18 - 18¼ 46 - 46.5	18½ - 18¾ 47 - 47.5	in. cm

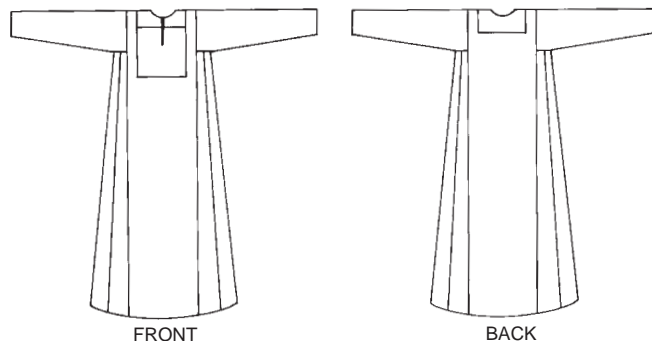


#101 Gaza Dress

Misses 6-18. \$14.95

This ankle-length gown is composed of easy-to-construct panels that are perfect for pieced or handwoven fabric variations, needlework, and other embellishment. Create an heirloom with one of the traditional embroidery designs included in the pattern.

Suggested fabrics: Crisp or soft fabrics such as denim, broadcloth, muslin, linen, lightweight wool. Traditional colors are black, indigo, white, or natural.

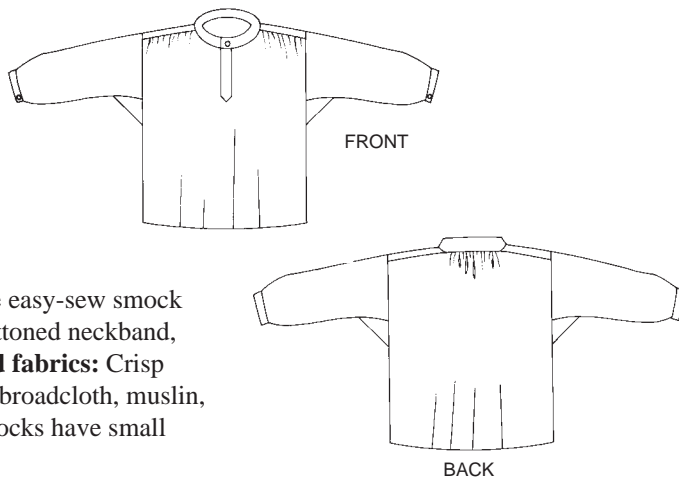


#102 French Cheesemaker's Smock

Misses 6-20; Men's 32-46. \$14.95

This roomy pullover style is traditional garb for cheesemakers in Roquefort, France, and a comfortable smock for your studio or daily outings. Popular choice for Medieval and Renaissance reenactors. Sized for men and women, the easy-sew smock features shoulder yoke, simple narrow buttoned neckband, and optional underarm gussets.

Suggested fabrics: Crisp medium-weight fabrics such as gingham, broadcloth, muslin, silk, lightweight corduroy. Traditional smocks have small blue and white checks.

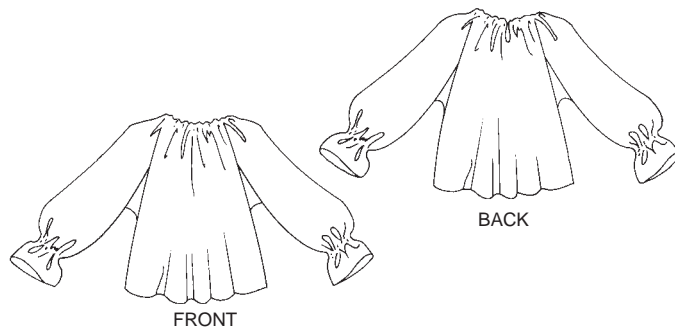


#103 Roumanian Blouse

One size fits Misses 6-16. \$16.95

Add your own character to this classic European peasant blouse with traditional handwork techniques or modern embellishments. A great period look when worn under a fitted vest or jacket. Instructions for embroidery, smocking, crocheted edging, and fine hand sewing are included.

Suggested fabrics: Lightweight, soft fabrics such as fine cotton or linen, silk crepe, muslin, cotton gauze.

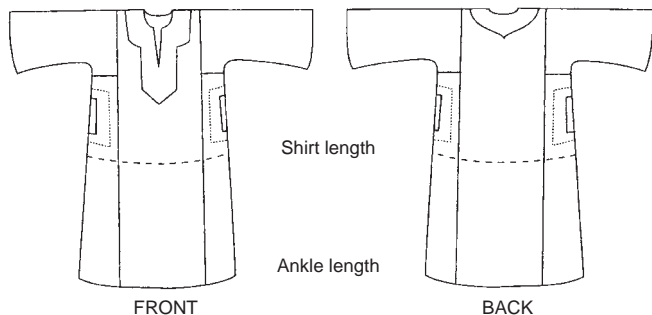


#104 Egyptian Shirt

Misses 6-16; Men's 32-44. \$16.95

This is a shortened version of the traditional Egyptian *galabia* or robe. Loose-fitting style with side panels and slit pockets. The yoke can be turned to the inside, or to the outside for interesting contrast. Instructions are included for knotted buttons, decorative cording, soutache appliqué, and lengthening the shirt to make the *galabia*.

Suggested fabrics: Crisp or soft fabrics such as cottons, muslin, lightweight denim, broadcloth. For appliqué pieces, use 100% cotton.





#105 Syrian Dress

Misses 6-18. \$14.95

For crossing the deserts of Africa or the urban landscape, this flowing dress drapes gracefully from a triangular shoulder yoke that's a perfect canvas for needlework or fabric artistry. Pattern includes instructions for optional embroidery stitches and design motifs.

Suggested fabrics: Crisp or soft fabrics such as lightweight denim, broadcloth, cotton, linen, lightweight wool. Traditional colors are black, blue, white, or red.



FRONT



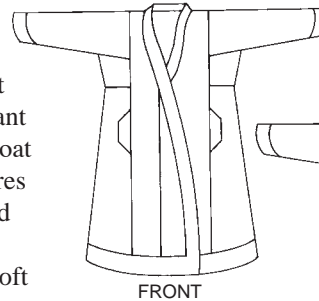
BACK



#106 Turkish Coat

Misses 6-16. \$16.95

A favorite with quilters and clothing artists, this coat originated in Central Asia, where it is made in brilliant silks and floral cottons. The boot-length reversible coat is perfect for inventive fabric combinations. It features a quilted or trapunto border at the hem, neckline, and front opening. Instructions for quilting and trapunto are included. **Suggested fabrics:** Medium-weight, soft fabrics such as broadcloth, silk, linen, or lightweight wool. The coat's segmented design makes it easy to incorporate small pieces of your treasured handwoven or vintage fabrics.



FRONT



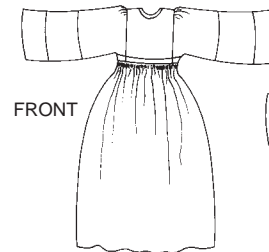
BACK



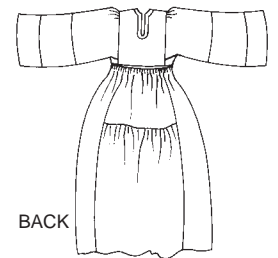
#107 Afghan Nomad Dress

Misses 6-16. \$16.95

This traditional dress worn by nomadic women in Afghanistan is ideal for mixing fabrics and embellishments. The raised bodice is fitted and has a neck opening that can be placed at front or back. Pattern includes instructions for traditional embroidery stitches, fringed decoration, and beadwork. **Suggested fabrics:** Soft, medium-weight fabrics such as cotton, rayon challis, or silk; the upper sleeve and/or skirt may be of soft rayon or silk velvet. This dress is often made in many prints, which is a wonderful opportunity to use up bits and pieces of brilliant fabrics.



FRONT



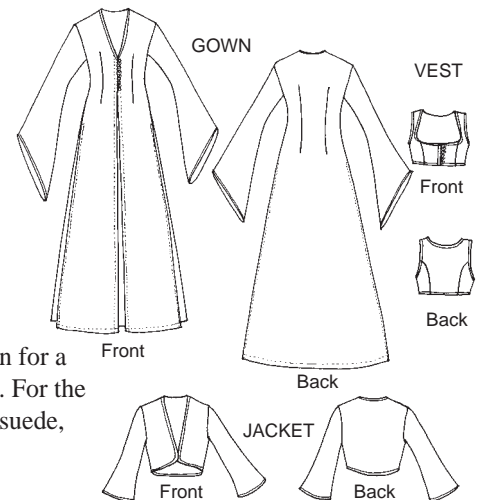
BACK



#108 Turkish Dancer

Misses Extra Small to 2X Large. \$19.95

A beautiful three-piece ensemble based on 19th-century Ottoman Empire fashions, including flowing *entari* gown, fitted vest, and jacket. Easy-sew garments are perfect for wearable artists, costumers, belly dancers, and reenactors. Add elaborate embellishment with machine embroidery, braid trim application, and beadwork for a lavish look. Wear with #106 Turkish Coat and the Turkish Pants from #119 Sarouelles for a complete and authentic look. **Suggested fabrics:** for the Entari, lightweight drapery silk, polyester, rayon for a gown; or medium-weight silk, linen, cotton, or wool for a coat. For the



Front

Back

JACKET

Front

Back

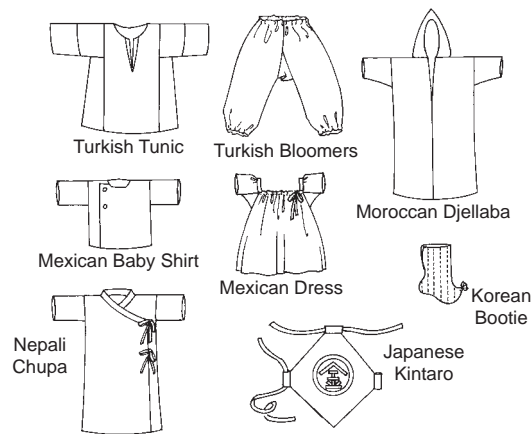
Jacket and Vest, all weights of silk, linen, velvet, cotton, wool, felt, denim, brocade, satin, suede, upholstery fabric.



#109 Little Folks

Sizes Infant-4T. \$19.95

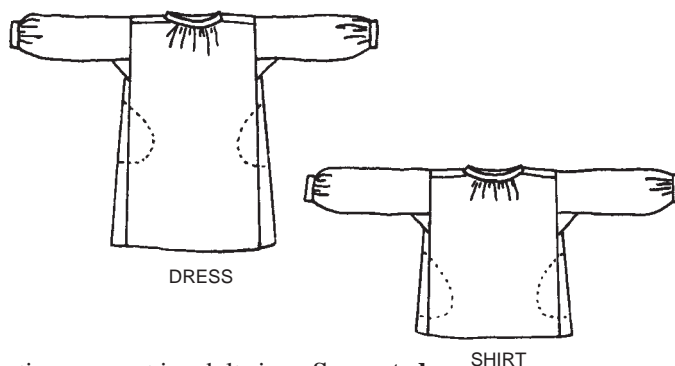
An international collection, featuring eight patterns and a variety of optional handwork techniques. Dress your sweeties up in a Japanese Kintaro, Mexican Dress and Baby Shirt, Korean Booties, Nepali Chupa, Moroccan Djellaba, or Turkish Tunic and Bloomers. **Suggested fabrics:** Light to medium-weight cottons such as broadcloth, batiste, muslin, corduroy, or flannel.



#110 Little Kittel

Children's Sizes 4-10. \$16.95

The Kittel is a loose-fitting over-garment in dress and shirt lengths. Soft pleats fall from an ample neckband. Sleeves connect to side panels with gussets and are pleated at the wrists into buttoned cuff bands. Shoulder yokes, neckband, cuffs, side seams, and side pocket openings can be decorated with traditional chain-stitch. Embroidery designs and instructions are included. Use #148 Black Forest Smock to make a coordinating garment in adult sizes. **Suggested**



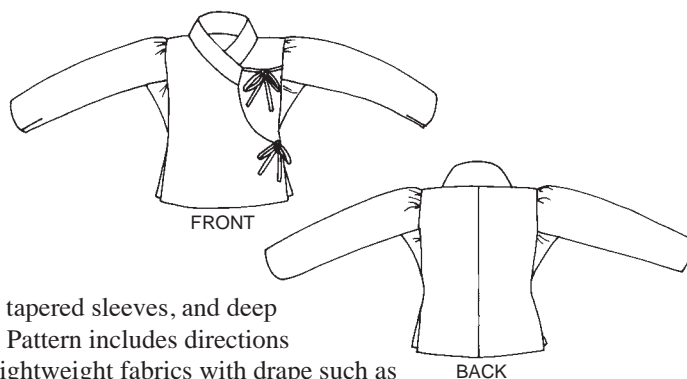
Fabrics: Soft or crisp fabrics such as linen, homespun, broadcloth, gingham, denim, featherweight corduroy, or lightweight wool.



#111 Nepali Blouse

Misses Extra Small to Extra Large. \$16.95

In Nepal, this wrap-and-tie blouse is traditionally made of velvet and worn under a wrap-style *chupa* or jumper (like our #131 Tibetan Chupa) or over a wrapped and pleated skirt formed from a sari or length of fabric. The semi-fitted blouse features a wide band collar, tapered sleeves, and deep underarm gussets for ease of movement. Pattern includes directions



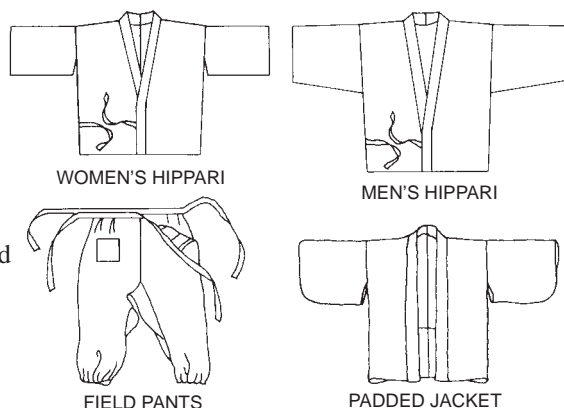
for wrapping and pleating a companion skirt. **Suggested fabrics:** Lightweight fabrics with drape such as rayon, velvet, or silk; medium-weight cotton; lightweight wool. Traditional colors are shades of red, pink, or purple.



#112 Japanese Field Clothing

Misses 6-16; Men's 32-44. \$19.95

Versatile and comfortable garments include the *hippari* (jacket) for men and women, *monpei* (pants) and padded jacket for women. Beautiful in traditional ethnic prints or coordinating new age fabrics. Instructions included for traditional folded and stitched ties. **Suggested fabrics:** For Hippari and Field Pants, choose medium-weight tightly woven materials such as cotton, lightweight denim, or silk. Traditional Japanese fabrics are usually indigo-dyed

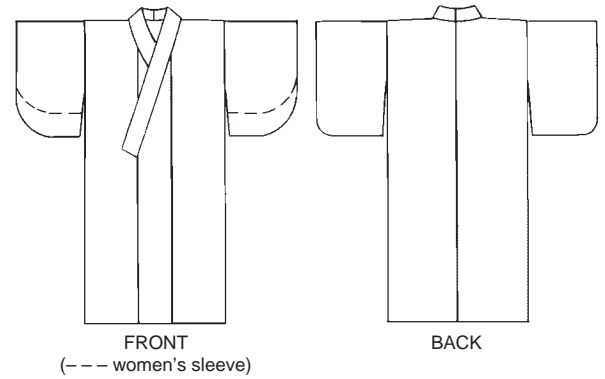


ikat weave or striped cotton in blue, black, gray, or brown. For Padded Jacket, choose light to medium-weight cotton, silk, or rayon, or lightweight wool.



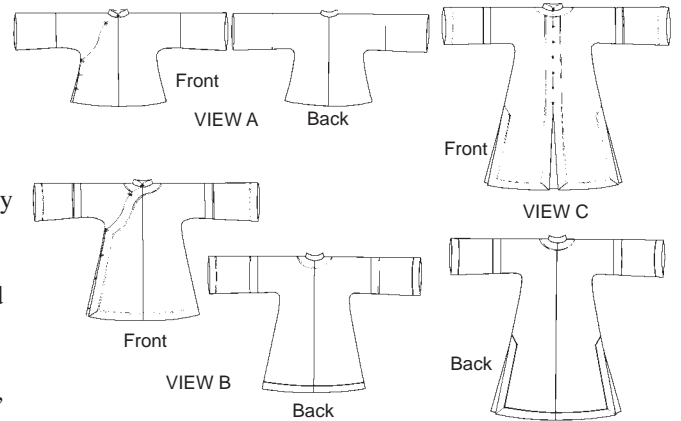
#113 Japanese Kimono

Sized for men and women to 6 ft. tall. \$16.95
 The timeless simplicity of this elegant garment is still enchanting. Our unlined informal kimono (*yukata*) can be worn in various lengths, as a dress, coat, or robe. Pattern includes instructions for *shibori* dyeing, *sashiko* embroidery, and for making an informal *obi* or sash. **Suggested fabrics:** Light or medium-weight cotton, rayon, or silk. Yukata kimono are often blue and white, or other colorful prints.



#114 Chinese Jacket

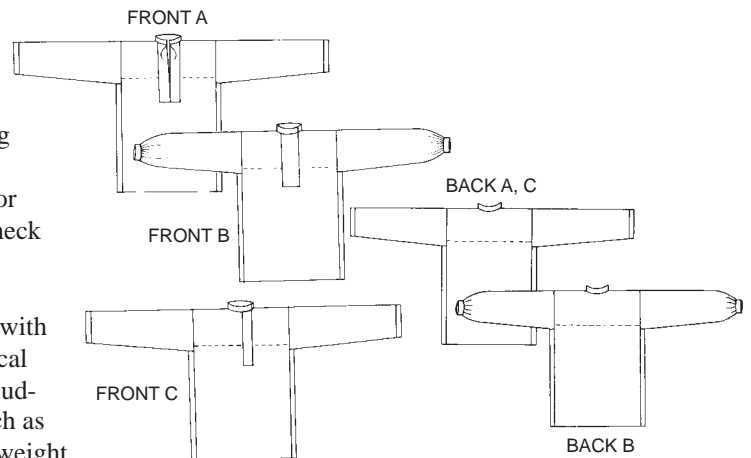
Misses 6-16. \$19.95
 This classic jacket in three lengths and with front or asymmetrical opening is descended from a formal court robe of the Ming Dynasty (1368-1644). Since then, the garment has been simplified into a truly versatile design with different options for unusual closures. Pattern includes heat transfer design for traditional embroidered motifs and instructions for embroidery. **Suggested fabrics:** Silk or silk-like synthetics, light or medium-weight cotton, or lightweight wool.



#116 Shirts of Russia & Ukraine

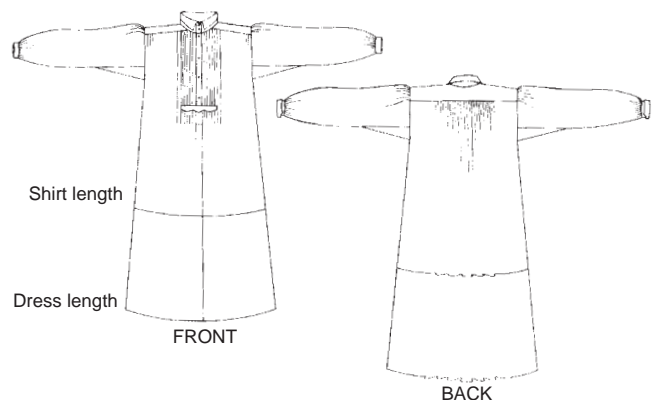
Misses 6-20; Men's 32-48. \$16.95
 These popular shirts reflect a merging of European and Central Asian traditions, and can easily be lengthened for versatile dress or robe styles. Three neck opening variations, including center front and side front. Make the basic design quickly and then embellish it with authentic embroidery motifs. Historical lore and embroidery instructions included. **Suggested fabrics:** Light or medium-weight soft fabrics such as cotton, broadcloth, linen, chambray, muslin, rayon challis, lightweight wool, or silk.

ed. **Suggested fabrics:** Light or medium-weight soft fabrics such as cotton, broadcloth, linen, chambray, muslin, rayon challis, lightweight wool, or silk.



#117 Croatian Shirt

Misses 6-20; Men's 32-48. \$14.95
 A traditional fashion worn by peasants, farmers, and shepherds in the Pannonian Basin of old Yugoslavia. Originally made from homespun linen, but elegant in cotton, silk, and sheers. Soft pleats at the shoulders, with a tucked front yoke. Pattern includes historical information and instructions for decorative stitching on yoke. **Suggested fabrics:** Shirting-weight fabrics such as cotton, blends, broadcloth, linen, chambray, muslin, gingham, or silk.

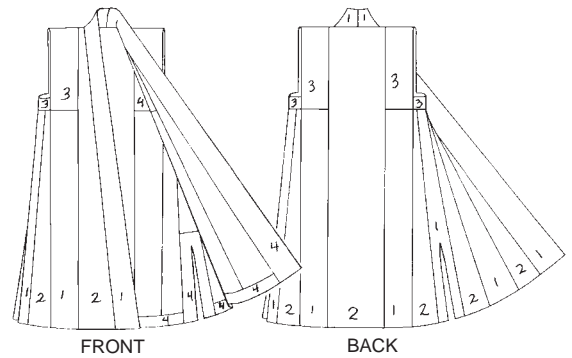




#118 Tibetan Panel Coat

Misses 6-18. \$19.95

A festive full-length vest or sleeveless coat still worn by Tibetans today on special occasions. Its simple rectangular components make it perfect for pieced or handwoven fabrics, or exciting combinations of color and texture. Pattern includes instructions for traditional stamped design and bound edge, as well as notes for handweavers. **Suggested fabrics:** Choose assorted combinations of prints and solids in similar weights. Light to medium-weight cotton, blends, corduroy, wool; decorative fabrics such as brocade, velvet, embroidered heirlooms; handwoven wool.



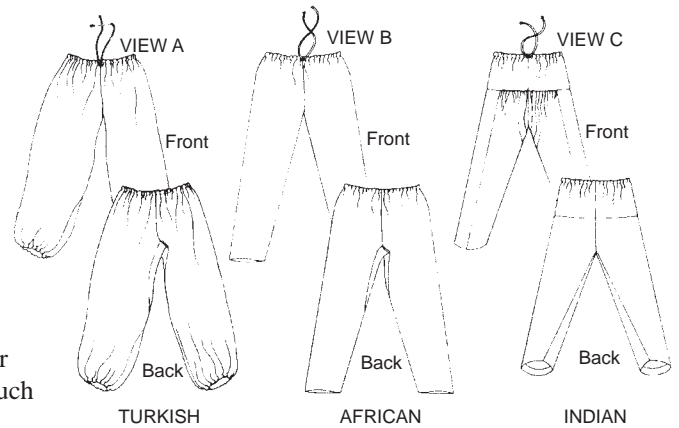
#119 Sarouelles

Misses 6-18; Men's 32-44. \$16.95

Three comfortable and timeless pants designs from Turkey, Africa, and India, with elastic or drawstring waist and ankle variations. Full and flowing easy-sew styles are perfect for casual wear, yoga, belly dancing, or costuming. Historical lore and traditional embroidery designs included. **Suggested fabrics:**

The Turkish pants look best in light-

weight sumptuous fabrics with drape, such as rayon challis, chiffon, or gauze. For African and Indian pants, choose medium-weight fabrics such as cotton, silk, rayon, wool, or blends.

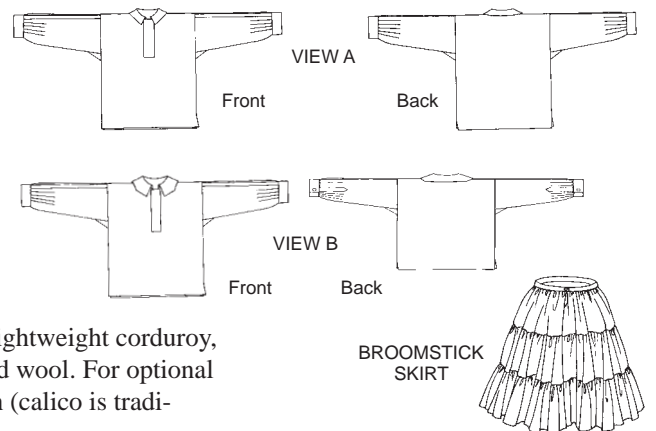


#120 Navajo Blouse & Skirt

Misses 4-20; Girls 4-10. \$14.95

This pullover blouse was traditionally made of velvet, lined with calico, embellished with silver buttons, and worn with a calico "broomstick" skirt. Vary the fabric combinations to match your own personal style. Pattern includes complete blouse instructions, drawings for tiered skirt, and tips for broomstick pleating effect. **Sug-**

gested fabrics: Velvet, velveteen, velour, lightweight corduroy, light to medium-weight cottons, blends, and wool. For optional contrasting facings: soft, lightweight cotton (calico is traditional) or blends.

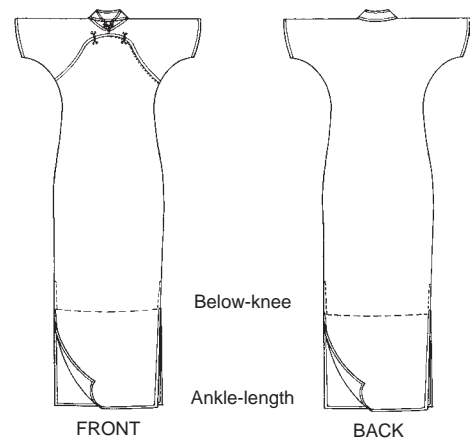


#122 Hong Kong Cheongsam

Extra Small to 3X Large. \$16.95

This classic exotic dress in two lengths is synonymous with Oriental elegance. Simple to sew, it has only two main pattern pieces and an appealing side-front opening topped off with a mandarin collar. Pattern includes instructions for custom fitting and authentic embellishment.

Suggested fabrics: Light to medium-weight silk; lightweight brocade and jacquard weaves; satin; rayon or blends.

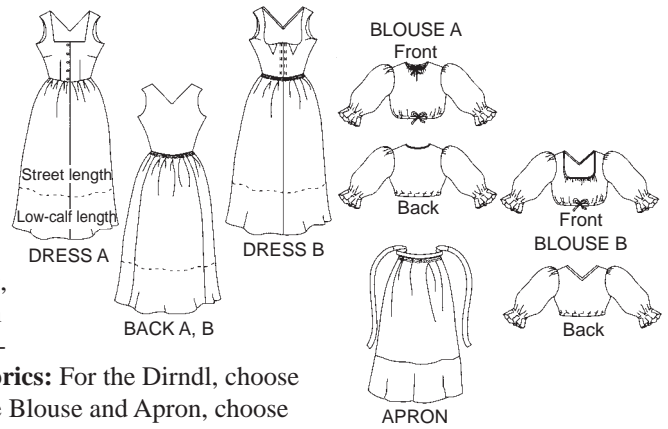




#123 Austrian Dirndl

Misses 8-16. \$19.95

A favorite at Renaissance Faires and Oktoberfests, this three-piece outfit enhances the maiden in you. Variations include knee-length or low-calf length, dirndl bodice with high or low neck, high- or low-neck blouse, and an apron. Pattern features many options for detailing, ruffling, ruching, and shaping. Information included about authentic detailing, custom-



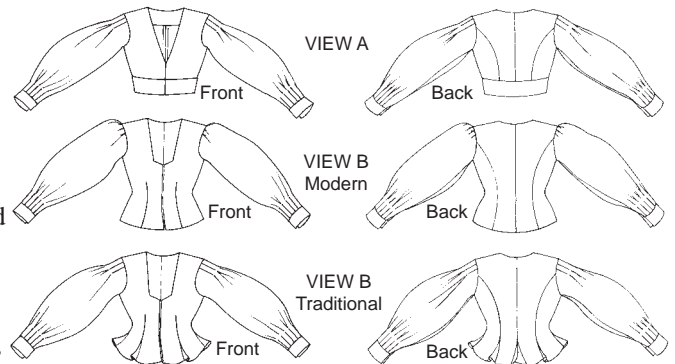
fitting, and adapting garment for Renaissance costumes. **Suggested fabrics:** For the Dirndl, choose medium to heavyweight cotton, silk, wool, velvet, or corduroy. For the Blouse and Apron, choose light to medium-weight cotton, silk, rayon, or blends. The Apron is also nice in taffeta.



#124 Bolivian Milkmaid's Jacket

Misses 8-22. \$14.95

These short jackets, worn by women of the Bolivian altiplano, are reminiscent of Spanish Conquistador costumes. Beautiful in brightly colored velvet and trimmed with beading and braid. Pattern includes jacket lore and instructions for authentic detailing. **Suggested fabrics:** Medium to heavyweight fabrics such as velvet, wool, corduroy, flannel, cotton, linen, or silk.

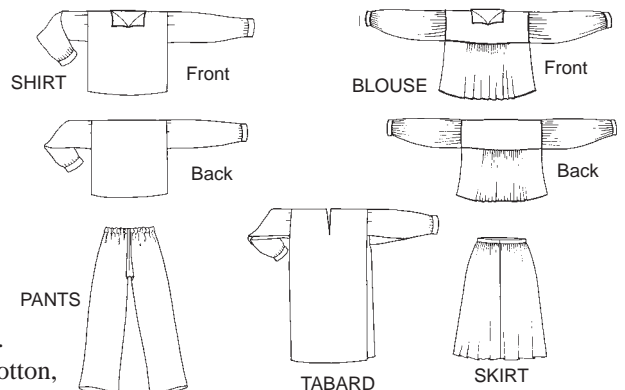


#125 Huichol Wardrobe

Blouse and skirt sized for Misses 6-16; all other pieces Misses small to Men's large. \$19.95

The lavishly embroidered clothing of the Huichol (pronounced "WEE-chole") Indians of Mexico reflects the richness of their culture. This easy-to-sew collection of traditional garments offers many possibilities for creative embellishment. Information about Huichol dress and authentic detailing included.

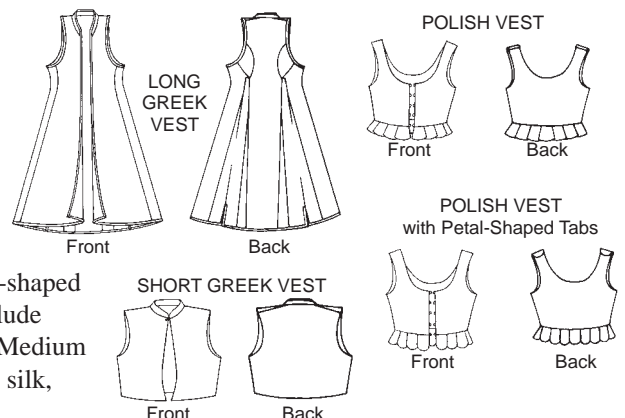
Suggested fabrics: Light to medium-weight cotton, rayon, linen, or blends; medium-weight silk, muslin, linen; lightweight wool or blends.



#126 Vests from Greece and Poland

Misses 6-16; Men's 34-44. \$16.95

These authentic designs can be lavishly decorated, embroidered, appliquéd, and otherwise embellished. Styles include a short vest for men and women from Greece, mid-calf Greek vest for women, and two variations of a Polish woman's vest with petal-shaped tabs along the bottom edge. Pattern pieces include traditional design motifs. **Suggested fabrics:** Medium



to heavyweight, closely woven fabrics such as denim, velveteen, corduroy, silk, velvet, wool, blends, and upholstery fabric.



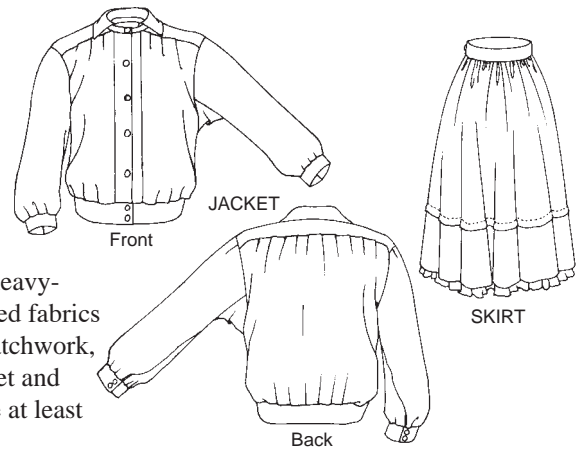
#127 Seminole Jacket & Skirt

Misses 6-16; Men's 34-44. \$16.95

This dirndl style skirt and blouson jacket are distinguished by the intricate and colorful piecing known as Seminole patchwork. The skirt features an optional dust ruffle and hem tuck. Pattern includes information about the history and technique of Seminole patchwork. **Suggested fabrics:**

For Jacket without patchwork, choose medium to heavy-weight cotton, wool, linen, flannel, blends, or napped fabrics such as corduroy or velveteen. For Skirt without patchwork,

choose light to medium-weight cotton, rayon, wool, linen, or blends. For Jacket and Skirt with patchwork, choose light to medium-weight cotton or blends that are at least 50% cotton.



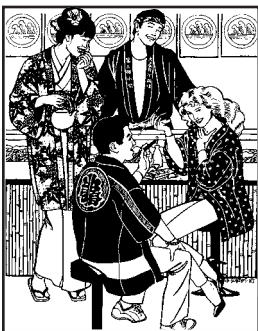
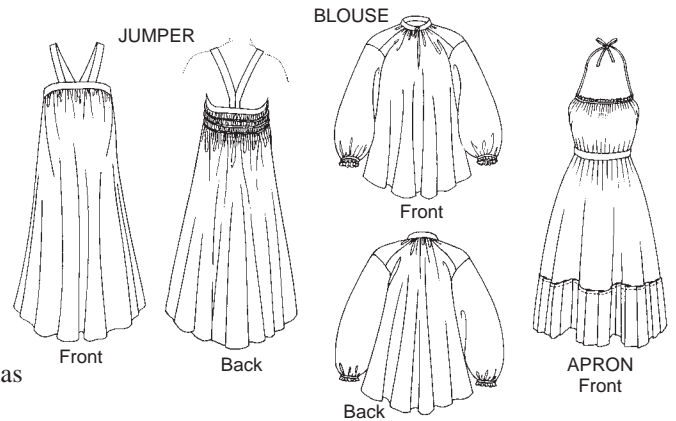
#128 Russian Settlers' Dress

Misses 6-16. \$16.95

A complete ensemble from Old Russia that includes jumper, blouse, and apron, along with options for lace and embroidered embellishment. Wear the jumper by itself as a sundress or combine with other pieces for a variety of looks. Pattern includes historical information about Russian peasant costume and instructions for traditional punch needle

embroidery. **Suggested fabrics:** Light to medium-weight fabrics such as silk, cotton, rayon, linen, or blends in challis or crepe.

embroidery. **Suggested fabrics:** Light to medium-weight fabrics such as silk, cotton, rayon, linen, or blends in challis or crepe.

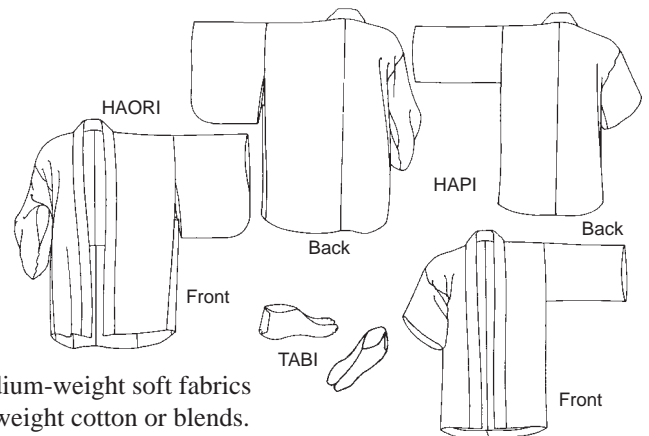


#129 Japanese Hapi and Haori

Misses 6-20; Men's 34-44. \$16.95

For formal occasions or everyday layered dressing, either jacket offers a special touch to any wardrobe. Simple rectangular shapes are great for inventive color and texture combinations. A pattern for the *tabi*, the traditional split-toe slipper socks, is included. **Suggested fabrics:** For the Hapi, choose light to medium-weight soft or crisp cottons or blends; silks with body

such as noil or shantung; linen; wool. For the Haori, choose light to medium-weight soft fabrics with drape such as silk, rayon, or blends. For the Tabi, choose medium-weight cotton or blends. Fabrics with nap, pile, or one-way design are not suitable for either jacket.

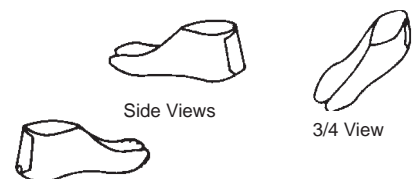


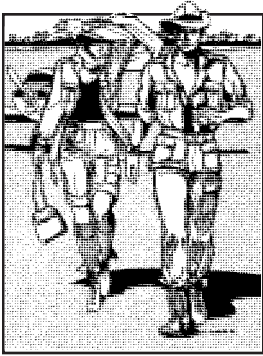
#129A Japanese Tabi

Women's Shoe Sizes 4 to 10½;

Men's sizes up to 9. \$8.00

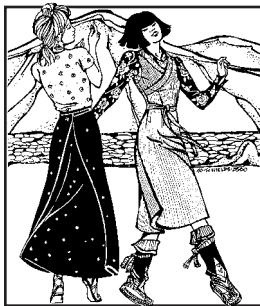
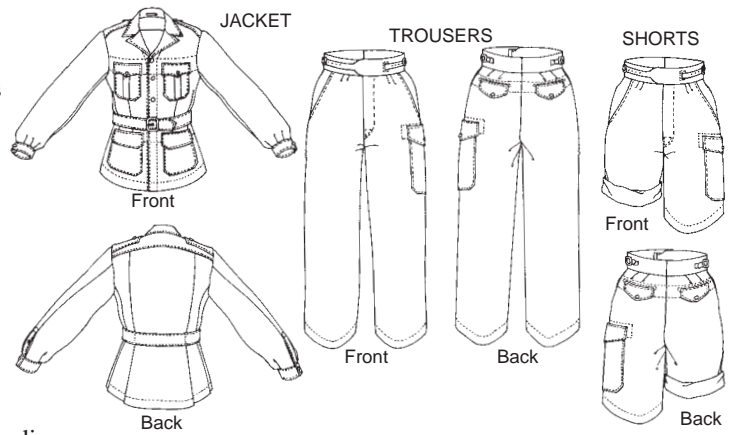
These fabric slipper socks are traditionally worn with sandals or zori, to complete a Japanese outfit. They can also be worn with modern flip-flops or thong sandals as a unique fashion accessory that also provides warmth and protection for the toes, or by themselves as comfortable at-home slippers to protect your floors. NOTE: The Tabi pattern is also included in #129 Japanese Hapi and Haori. **Suggested fabrics:** Medium-weight cotton and blends.





#130 Australian Bush Outfit

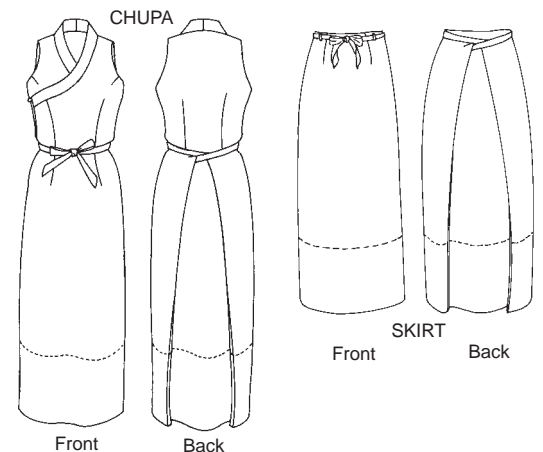
Misses 8-20; Men's 34-44. \$19.95
 The bush jacket, trousers, and shorts from Hollywood's version of the tropical British colonies. Make it in khaki for the authentic look, or silk twill for a classy updated impression. Pattern includes instructions for the slingeroo, a handy over-the-shoulder bag that completes the outfit. **Suggested fabrics:** Medium-weight cottons and blends such as poplin, denim, or chino; medium-weight linen; light-weight wool gabardine.



#131 Tibetan Chupa & Wrap Skirt

Misses Extra Small to Extra Large. \$16.95
 This wrapped jumper has a centuries-long history in Tibet. The Chupa features an asymmetrical wrap front, wide neckband, and simple faced armholes. Both the Chupa and Chupa-inspired skirt have unique side extensions that wrap around the back to tie in front. The resulting silhouette is slim, yet the extensions enable enough leg room to make walking easier than most wrap skirts. **Suggested**

fabrics: Medium-weight cottons and blends such as denim, corduroy, velveteen, and poplin; medium-weight linen; medium-weight wool such as flannel, gabardine, and tweeds; medium-weight silk such as noil or tussah.



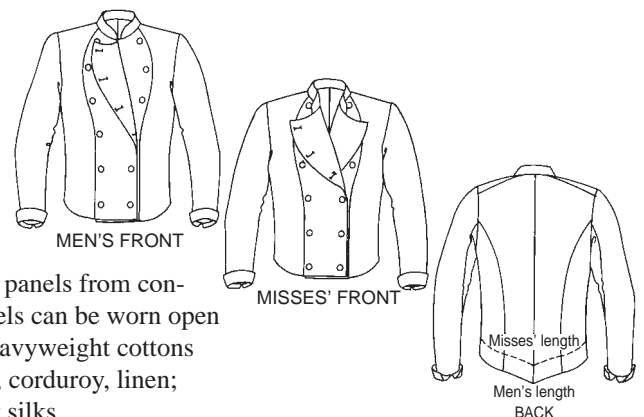
#132 Moroccan Burnoose

All sizes. \$14.95
 This sweeping cape is traditionally worn by Berber tribesmen over loose tunics, but it's also dramatic when untraditionally worn over urban outfits. The bias-cut half circle design features an ample hood for protection from the sand and sun, or for discreet camouflage. Details are included about different ways of wearing and draping the finished garment. **Suggested fabrics:** Medium to heavyweight wools and blends; upholstery-weight cottons or linen. Un-even plaids and napped fabrics are not suitable.



#133 Belgian Military Chef's Jacket

Misses 8-18; Men's 34-44. \$14.95
 Adapted from regulation Belgian military issue in olive cotton gabardine, our version also looks great in chef's white, brilliantly colored silk, or any other fabric. Cook up a creative variation of this fashionably cropped jacket by piecing the front and back panels from contrasting fabrics or with unusual buttons. Lapels can be worn open or closed. **Suggested fabrics:** Medium or heavyweight cottons and blends such as poplin, denim, gabardine, corduroy, linen; light to medium-weight wool; suiting weight silks.



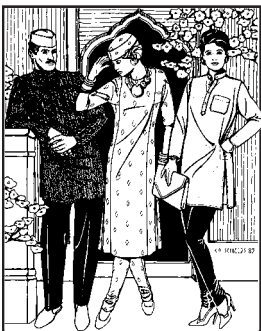
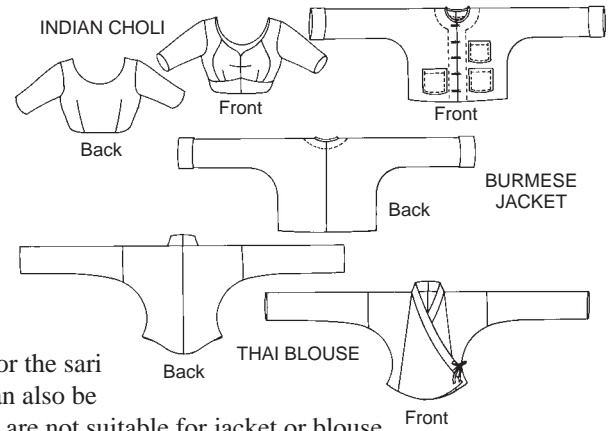


#134 South Asian Tops & Wraps

Extra Small to 3X Large. \$16.95

An exotic mini-wardrobe with Burmese jacket, Thai wrap blouse, and Indian *choli* to wear with a sari. Pattern also gives instructions for making three types of knotted frog closures and wearing the traditional sarong skirts and sari. Lengthen the tops for different looks or to showcase luscious fabrics. **Suggested fabrics:** For the Burmese Jacket and Thai Blouse, choose medium-weight cotton, silk, or light-weight wool. For the Choli, choose light to medium-weight cotton or silk. For the sari and sarong wraps, choose lightweight silks, synthetics, or cottons. Sarong can also be

made from wool jersey, challis, or crepe. Fabrics with nap or one-way prints are not suitable for jacket or blouse.

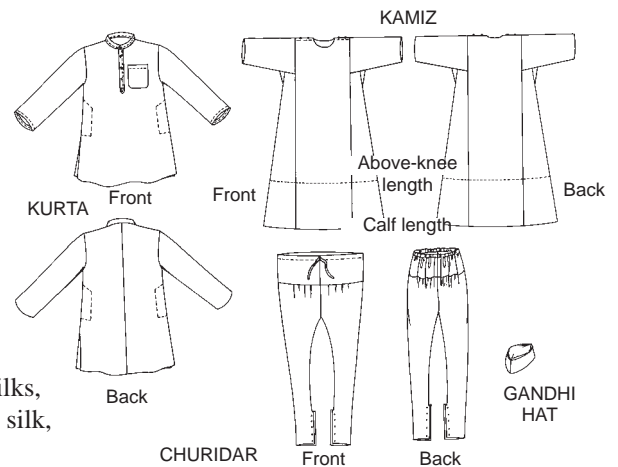


#135 Jewels of India

Misses 6-16; Men's 34-44. \$19.95

A grouping of truly versatile garments with a tailored *kurta* overshirt for men and women, *kamiz* tunic and bias-cut *churidar* pants for women. The simple shapes of these garments make it easy to vary them creatively. Top everything off with the Gandhi hat. Pattern includes historical information about Indian dress. **Suggested fabrics:** For the Kurta, choose any shirting fabric from gauze to flannel. For the Kamiz and Churidar, choose light to medium-weight cottons, silks, or synthetics; lightweight wool. For the hat, choose medium-weight cotton, silk, or wool; decorative weaves or brocade.

For the Kamiz and Churidar, choose light to medium-weight cottons, silks, or synthetics; lightweight wool. For the hat, choose medium-weight cotton, silk, or wool; decorative weaves or brocade.

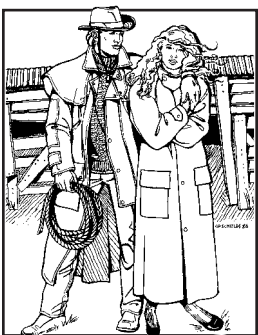
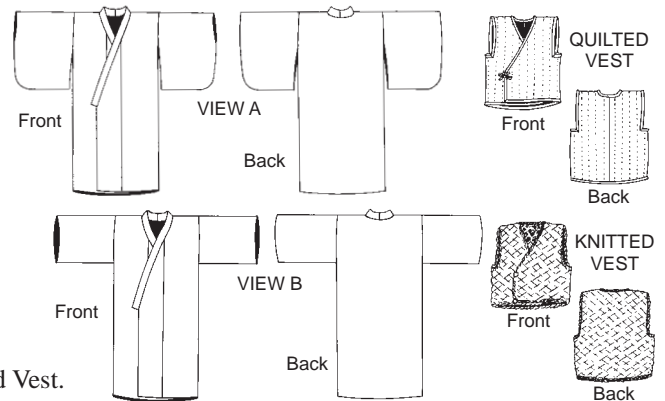


#136 Child's Kimono & Vests

Children's 2-10. \$16.95

A Japanese kimono with two sleeve choices for girls and boys, along with a companion quilted vest that's a snap to make from pre-quilted fabric. Pattern also includes instructions for a diamond stitch knitted version of vest and information about authentic detailing, including making and tying an obi sash. **Suggested fabrics:** Light to medium-weight cotton, rayon, silk, or blends; also pre-quilted fabrics for Quilted Vest.

Light to medium-weight cotton, rayon, silk, or blends; also pre-quilted fabrics for Quilted Vest.

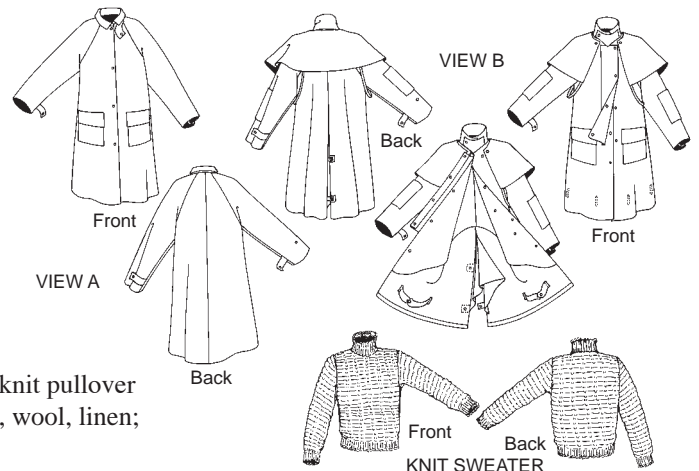


#137 Australian Drover's Coat

Misses 6-22; Men's 34-48. \$19.95

This is the classic outback duster coat. Its rugged construction and hearty design is perfect whether riding the open range or the urban trails. Make it in canvas or denim for a traditional look, microfiber or crinkle nylon for an updated water-repellent version. Pattern includes information about authentic detailing, waterproofing, and instructions for a knit pullover sweater. **Suggested fabrics:** Medium-weight denim, canvas, poplin, wool, linen; ripstop nylon, microfiber, or other water-resistant fabrics.

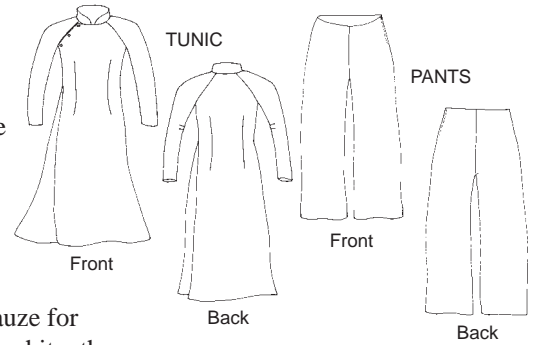
Medium-weight denim, canvas, poplin, wool, linen; ripstop nylon, microfiber, or other water-resistant fabrics.





#139 Vietnamese Ao Dai

Misses Extra Small to Extra Large. \$19.95
 This feminine ensemble of flowing Tunic and wide-legged pants is the traditional costume of Vietnam. The easy-sew Tunic features front and back waist shaping darts, mandarin collar, front neckline/armhole opening, tapered long sleeves with elbow darts, and long free-hanging front and back panels. The Pants have an easy full-legged fit, side zipper, and faced waistline.

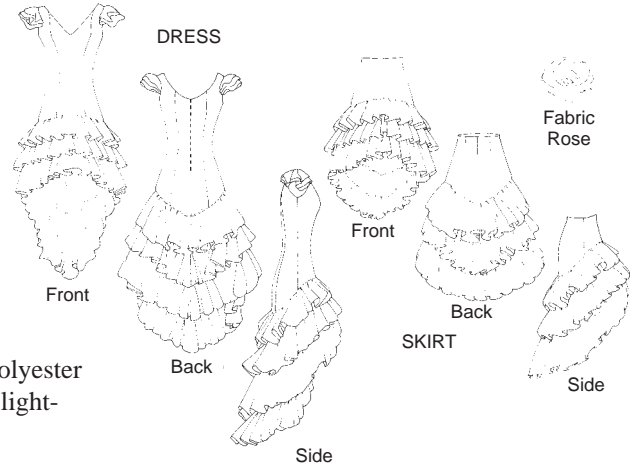


Suggested fabrics: Lightweight, drapery fabrics such as silk, polyester, or cotton gauze for Tunic and/or Pants; also embroidered brocade for Tunic. Ao Dai pants are typically white; the Tunic can be plain white, a plain or patterned color, or the traditional red and gold for a wedding garment.



#140 Flamenco Dress and Practice Skirt

Misses Extra Small to Extra Large. \$19.95
 A sensational fashion for dancing or dress-up, with lavish flounces that move with flash. Dress has princess seams, flounced cap sleeves, V-neck front, and up to four tiers of flounces. Skirt has back waist darts and raised waistline; make it with all four flounces or just one flounce for a salsa-hot miniskirt. Make simple-sew fabric Rose



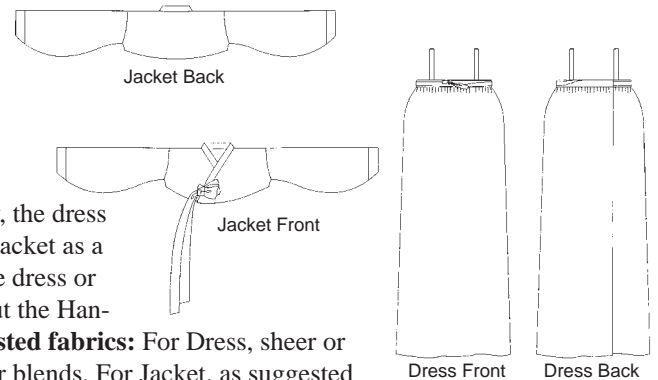
accessory to attached to dress or pin in hair. **Suggested fabrics:** Silk or polyester doupioni, taffeta, faille; other fabrics with body and slight stiffness. For lightweight drapery fabrics, lightly interface flounces.



#141 Korean Han-Bok

Misses Extra Small to Extra Large;
 Child's 4-14. \$19.95

This is the traditional costume of Korea, composed of the *chogori* or short jacket and *chima* or full dress. Wear both components of the Han-Bok in the traditional way, the dress alone as a sheer summery sundress, or the jacket as a dramatic art-to-wear companion to a simple dress or tunic. Pattern includes historical notes about the Han-

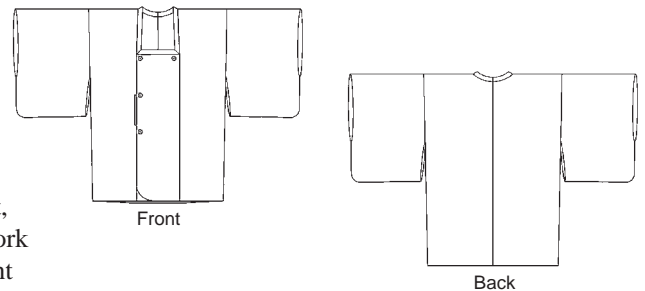


Bok and design motifs from different periods of Korea's history. **Suggested fabrics:** For Dress, sheer or lightweight fabrics with drape, such as silks, cottons, rayon, or polyester blends. For Jacket, as suggested for Dress, as well as lightweight fabrics with more body, such as handkerchief linen or taffeta.



#143 Japanese Michiyuki

Misses' Extra Small to 2X Large. \$16.95
 This three-quarter length kimono-style jacket originated in the 20th century as an over-kimono coat that was worn for extra warmth and/or protection. Today, the **Michiyuki** is also worn as a dressy overcoat, casual coat-dress, raincoat, and artist's or work smock. Pattern features double-breasted front opening, kimono style sleeves, narrow neck



band with mitered corners, and a handy pocket hidden in the front seam. **Suggested fabrics:** Drapery fabrics with body, such as rayon or silk crepe; microfiber; or water-repellent fabrics for the outer Michiyuki; lightweight silk or cotton for the lining.

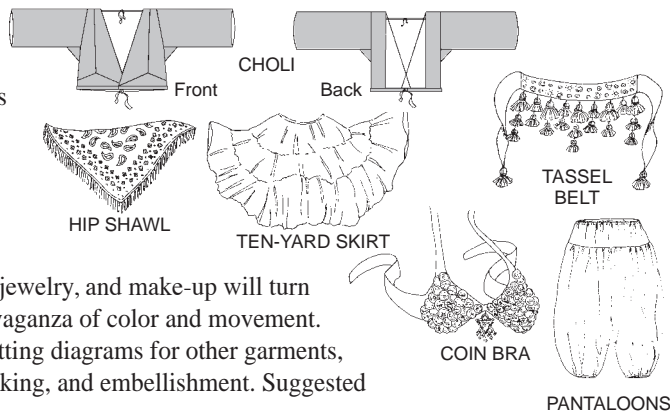


#144 Tribal Style Belly Dancer

Choli: Misses Small (10-12) to 2X Large (26-28) in B, C, and D cups; other garments gathered or tied to fit. \$19.95

This pattern is the perfect starting point for creating your own stunning style, whether you're a dancer, historic reenactor, or lover of exotic fashion. Your personalized selection of fabrics, fringes, tassels, adornment, jewelry, and make-up will turn this tribal collection into a wondrous extravaganza of color and movement.

Pattern includes graded pieces for choli, cutting diagrams for other garments,



and complete instructions for all garment assembly, fringe- and tassel-making, and embellishment. Suggested fabrics vary; see instruction booklet inside pattern for details.



#044 Tribal Style Headdress & Makeup Booklet

\$9.95

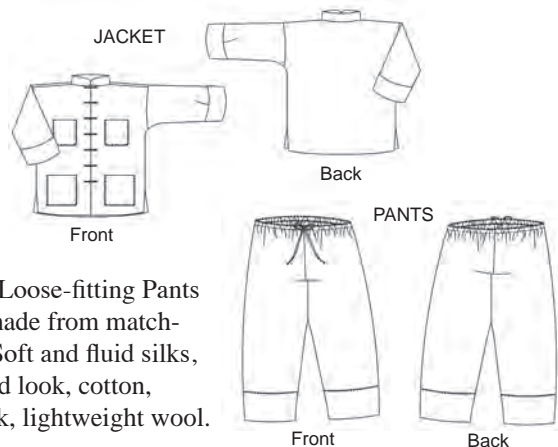
Use this guide as a starting point for expressing your exotic individuality and creating an electrifying tribal persona. Carolena Nericcio, of FatChanceBellyDance in San Francisco, shows you how to transform your everyday look into a sensational presence. With step-by-step tips and color photographs, you will learn how to master stage makeup techniques and how to build and decorate an impressive head wrap.



#145 Chinese Pajamas

Misses Extra Small to Extra Large, Men's Medium to 2X Large. \$19.95

A comfortable easy-sew Jacket and Pants combo for all-occasion wear. Mid-thigh Jacket is fully lined with stand-up collar, set-in sleeves, inside and outside pockets, button-loop frog closures, and extra-long sleeves that roll back to expose a colorful or decorative lining. Loose-fitting Pants have drawstring waist and cuff bands that can be made from matching or complementary fabric. **Suggested fabrics:** Soft and fluid silks, synthetics, cotton, silk velvet. For a more structured look, cotton, lightweight denim or corduroy, medium-weight silk, lightweight wool.

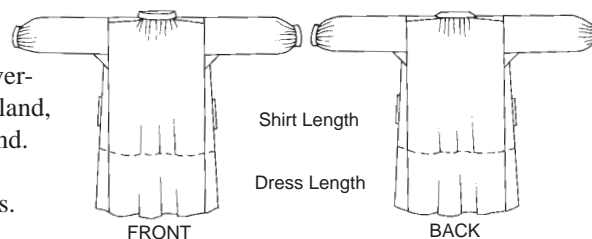


#148 Black Forest Smock

Misses 6-16; Men's 36-44. \$16.95

This traditional smock was called a Kittel, or over-garment, worn by workers in Germany, Switzerland, and France. Soft pleats fall from a wide neckband. Sleeves connect to side panels with gussets and are pleated at the wrists into buttoned cuff bands. Shoulder yokes, pocket welts, neckband, and cuffs were often decorated with chain-stitching

(design and instructions are included inside pattern). Our Black Forest Smock can be worn by men as an over-shirt, and by women as a mid-calf length dress. Use #110 Little Kittel to make it for the



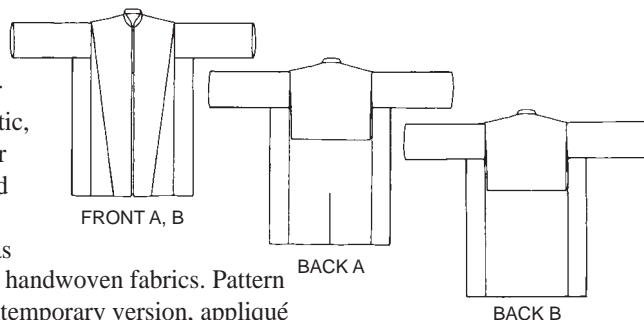
kids. **Suggested Fabrics:** Soft or crisp fabrics such as linen, homespun, broadcloth, gingham, denim, featherweight corduroy, or lightweight wool.



#150 Hungarian Szur

One size for men and women. \$16.95

Worn by Magyar herdsmen in Hungary as far back as the Middle Ages, the Szur is a dramatic, mid-calf coat that was traditionally worn over the shoulders as a cape and lavishly decorated with cutwork felt appliqué. The geometric shapes of this garment make it an ideal canvas for other handwork techniques, as well as for handwoven fabrics. Pattern includes instructions for a traditional and contemporary version, appliqué



decoration, and historical lore about the Magyar. **Suggested fabrics:** Heavyweight fabrics such as wool, felt, corduroy, or denim; also water-repellent microfiber for a raincoat. The Szur is traditionally made in felted wool with felt appliqués.

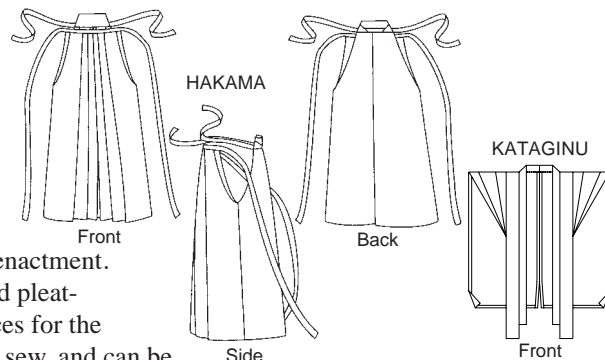


#151 Japanese Hakama & Kataginu

Hakama, all sizes. Kataginu, one size. \$14.95

These two essential garments from the traditional samurai or warrior costume were worn over a knee-length kimono for formal occasions. Today, they are frequently worn for official occasions, martial arts, and historic re-enactment.

The pattern includes instructions for cutting and pleating the Hakama in any size. Actual pattern pieces for the



Koshiita (backboard) come in three sizes. The Kataginu is easy to pleat and sew, and can be made to match the Hakama for a traditional appearance or as a contrasting wearable art accent.

Suggested fabrics: For Kataginu, crisp fabrics that maintain their shape, such as linen, ramie, hemp, silk taffeta. For Hakama, same as Kataginu, but also lightweight wool suiting. Note: Kataginu fabric may have to be starched to preserve pleats, as they are not stitched.



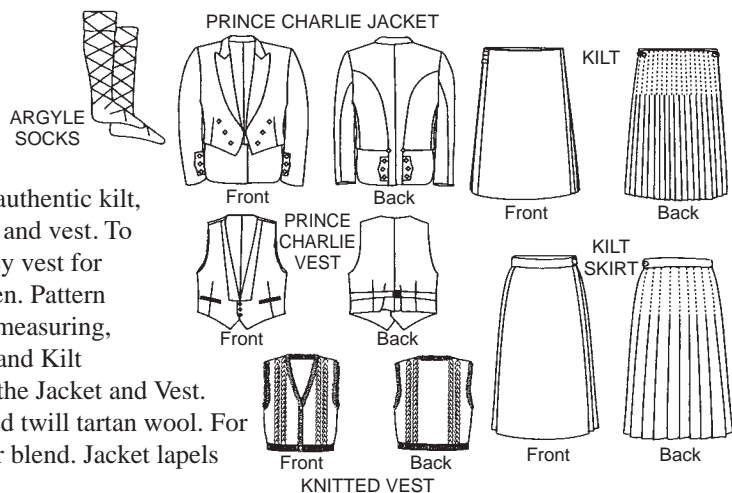
#152 Scottish Kilts

Kilt, all sizes. Jacket and vest, Men's 36-48. Knitted vest, Misses S, M, L. \$19.95

The romance of the Scottish Highlands is alive and well in this authentic kilt, kilt skirt, and Prince Charlie jacket and vest. To complete the ensemble, knit the lacy vest for women and the argyle socks for men. Pattern includes complete instructions for measuring, pleating, and constructing the Kilt and Kilt

Skirt; pattern pieces for cutting out and instructions for sewing the Jacket and Vest.

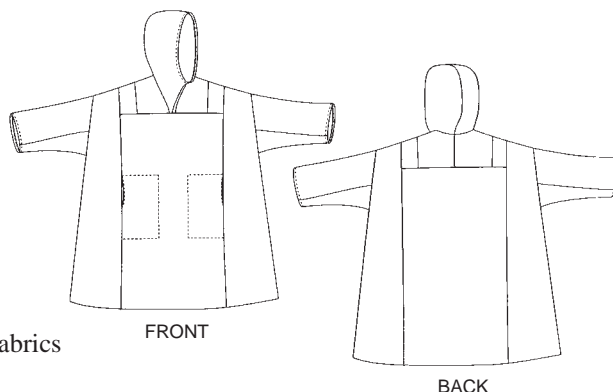
Suggested fabrics: For the Kilt, choose medium-weight worsted twill tartan wool. For the Jacket and Vest, choose suit-quality medium-weight wool or blend. Jacket lapels should be heavy-weight silk (peau de soie or similar quality).



#153 Siberian Parka

Sized for men and women Extra Small to Extra Large. \$16.95

A generously-sized pullover parka based on a smock worn by men in Western Siberia. Traditionally made of tanned leather, this easy-sew garment is equally wonderful in cozy fleece, sweatshirt material, or any warm outerwear fabric. **Suggested fabrics:** Medium to heavyweight outer-wear fabrics such as wool, sweatshirt jersey, or fleece.

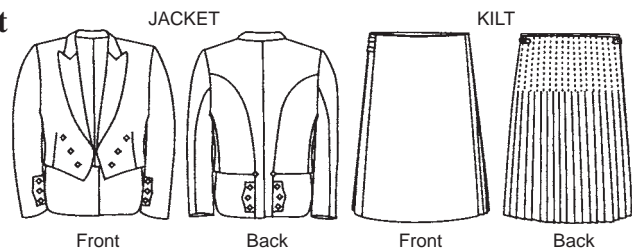




#154 Child's Scottish Kilt & Jacket

Child's sizes 4-14. \$16.95

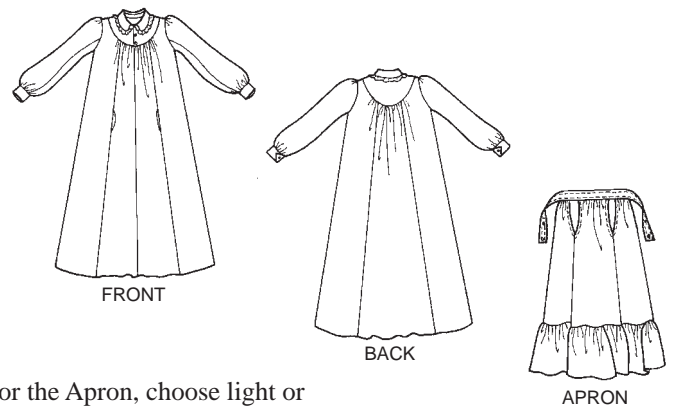
Our child's Kilt pattern features a pleating template to simplify the measuring and pleating steps for creating smaller-size garments from a length of tartan. The pattern includes complete step-by-step instructions for pleating and finishing the garment, with the option of fringed or self-faced front edges. The Prince Charlie Jacket is constructed from specific pattern pieces and features authentic garment details for a formal outfit. Also included is information about wearing the kilt today and resources for finding tartan fabric, accessories, Scottish event calendars, and more. **Suggested fabrics:** Kilt in medium-weight worsted twill tartan wool or equivalent; Jacket in suit-quality medium-weight wool or blend. Contrast fabric for the lapels, such as silk satin, is optional.



#201 Prairie Dress

Misses Small, Medium, Large. \$16.95

Worn by the stalwart women who conquered the 19th century American prairie, this flowing dress was traditionally worn with a practical apron. With or without the apron, mid-calf or ankle-length, the dress is feminine and comfortable. Instructions for vintage embroidered finishing touches are included. **Suggested fabrics:** For the Dress, choose soft fabrics such as calico, gingham, muslin, lightweight cotton, rayon, or wool challis. For the Apron, choose light or medium-weight cotton such as gingham, broadcloth, or muslin.



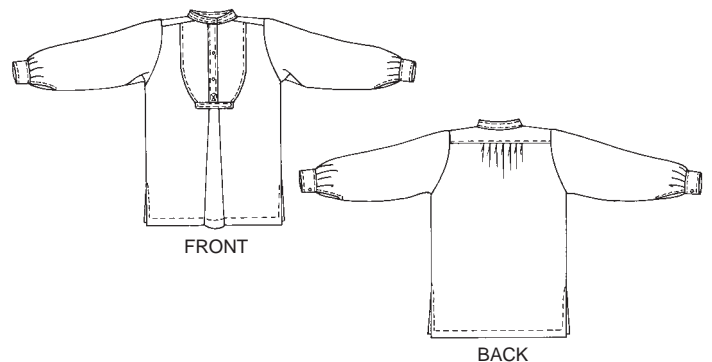
For the Apron, choose light or medium-weight cotton such as gingham, broadcloth, or muslin.



#202 Victorian Shirt

Misses 6-22; Men's 32-46. \$16.95

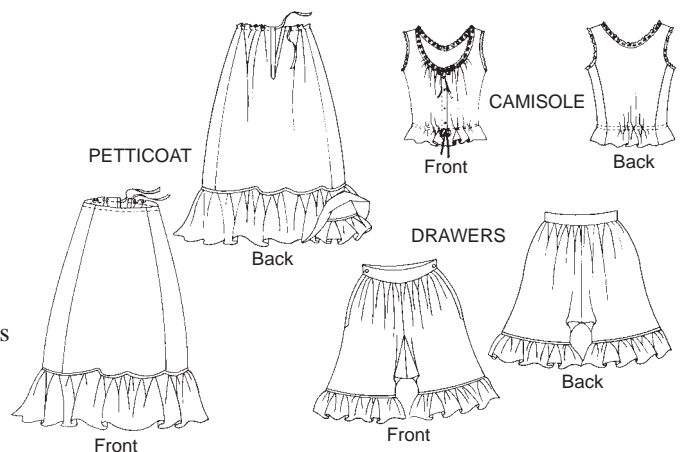
This bib-front dress shirt was fashionable for men in the 1870s and is still elegant today. A perfect companion with a vest or as a woman's oversized tunic or nightshirt. Pattern includes instructions for finishing touches. **Suggested fabrics:** Shirting weight fabrics such as broadcloth, gingham, muslin, or lightweight cotton flannel.



#203 Edwardian Underthings

Extra Small to 3X Large. \$16.95

Three charming "unmentionables" from the Edwardian bride's trousseau. The camisole, petticoat, and drawers make lovely undergarments or the prettiest summer outerwear. Pattern includes instructions for crocheted edging, lace insertion, and decorative embroidery stitches. **Suggested fabrics:** Fine cottons or blends such as lawn, batiste, broadcloth, muslin, or silk. Petticoat can also be made of taffeta.

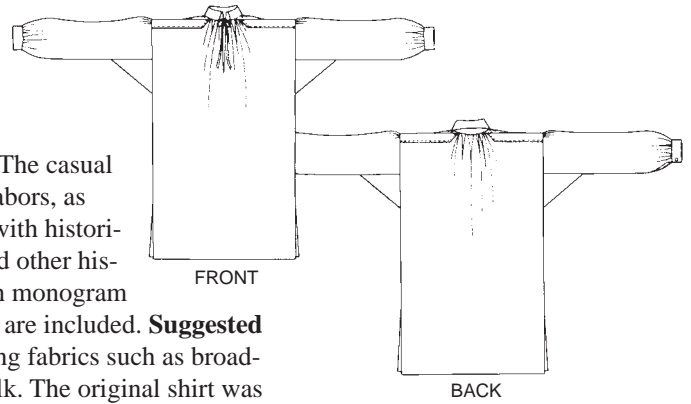




#204 Missouri River Boatman's Shirt

Misses 6-20; Men's 34-48. \$14.95

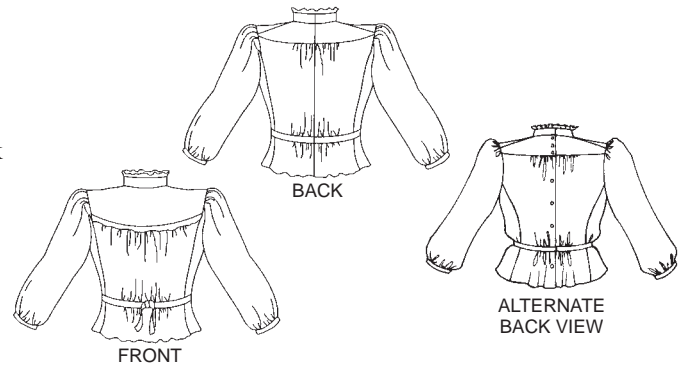
This roomy pullover work shirt was worn by hard-working raftsmen and fur traders on the rivers of 1800s America. The casual style is perfect for all types of today's labors, as well as pleasures. This shirt is popular with historical reenactors at Civil War, Western, and other historic events. Instructions for cross-stitch monogram and needle-lace godet for front opening are included. **Suggested fabrics:** Light or medium-weight shirting fabrics such as broadcloth, homespun, linen, chambray, or silk. The original shirt was made of handwoven linen.



#205 Gibson Girl Blouse

Small to 3X Large. \$16.95

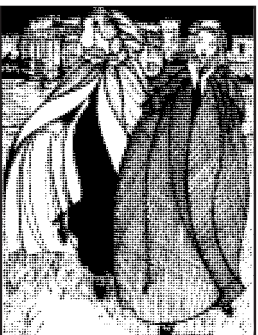
The Gibson Girl was the ideal of feminine beauty at the turn of the 20th century, and by 1905, the Sears Roebuck catalogue offered 150 versions of this blouse. The high collar, back buttoning yoke style is still just as flattering today. Instructions for optional tucks and lace insertion included. **Suggested fabrics:** Soft lightweight fabrics such as batiste, lawn, muslin, silk, gingham, or calico.



#206 Quilted Prairie Skirt

Misses 6-16. \$14.95

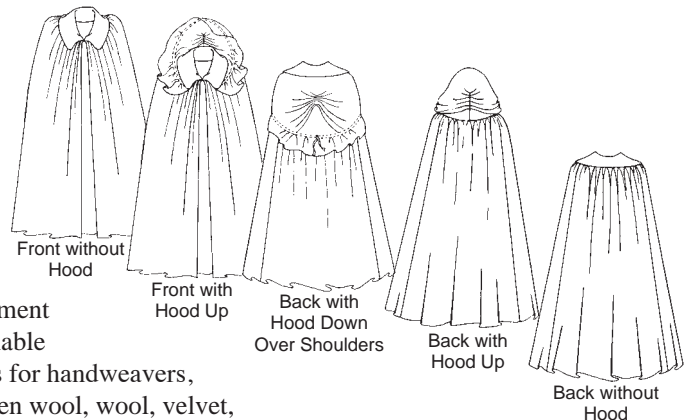
This quilted petticoat was a treasured item in a 19th-century wardrobe, whether elaborately Victorian or simply calico. Today, it makes a lovely all-season skirt. Ankle- or calf-length, the skirt is softly gathered into a waistband, and has a placketed side opening and optional hem ruffle. Quilting design transfers are included. **Suggested fabrics:** Lightweight cotton blends, wool challis, silk, satin, taffeta.



#207 Kinsale Cloak

One size for men and women (finished length from center back neckline to hemline is 55"/139cm). \$16.95

This billowing full-length cloak was a tradition in rural Ireland and can still be seen today in West County Cork, and at historic reenactments everywhere. The romantic garment fastens at the neck and features a detachable



loosely-fitted hood. Pattern includes fascinating historical lore, notes for handweavers, and instructions for finishing touches. **Suggested fabrics:** Handwoven wool, wool, velvet, corduroy, poplin, denim, chintz, or weather-treated fabrics.

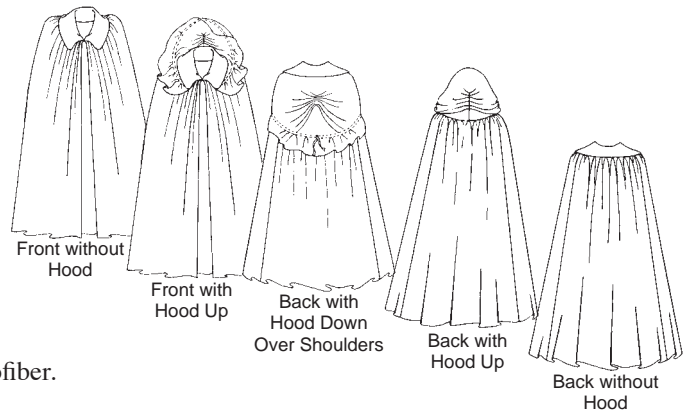


#208 Kinsale Cloak for Young Maidens

Girls 2-12. \$16.95

The little sister to Folkwear's best-selling romantic cloak for adults (#207 Kinsale Cloak). Full-length garment fastens at the neck and features a detachable, loosely fitted hood. Pattern includes historical lore, notes for handweavers, and instructions for finishing touches. **Suggested fabrics:** Velvet,

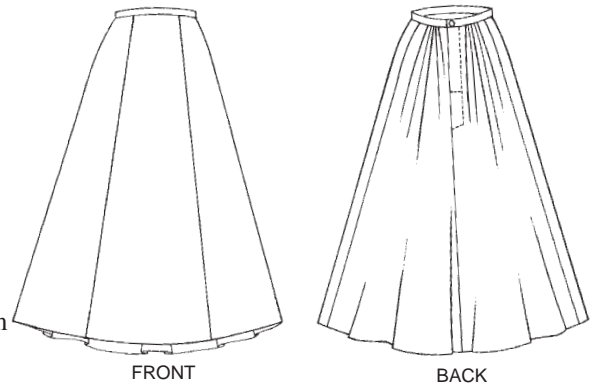
corduroy, denim, wool, handwoven fabrics, heavyweight silk, microfiber.



#209 Walking Skirt

Small to 3X Large. \$16.95

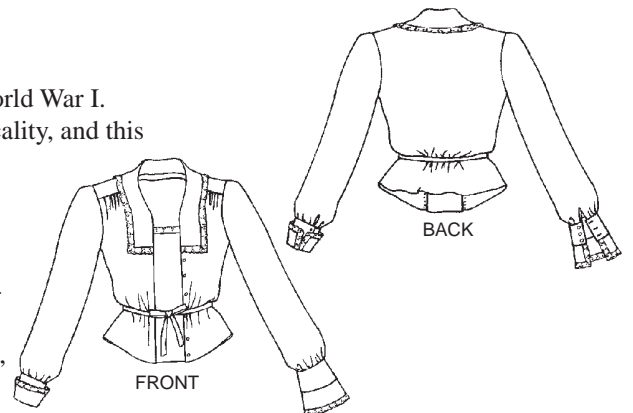
As the Victorian age drew to a close at the beginning of the 20th century and the Edwardian age dawned, women entered the arenas of sports and the professions. This was the skirt they wore, because it was comfortable and yet unencumbered by bustles and hoops. Full-length or street-length, with five gores. Pattern includes instructions for decorative cutwork embroidery (Broderie Anglaise). **Suggested fabrics:** Medium to heavyweight cottons and blends, linen, silk, lightweight wool, thin-wale corduroy, or velvet.



#210 Armistice Blouse

Small to 3X Large. \$16.95

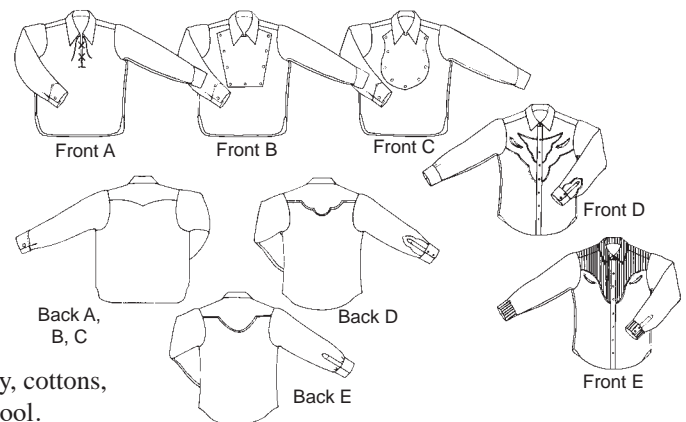
This blouse dates from 1918, at the end of World War I. Fashion was in transition from frills to practicality, and this blouse blends the two beautifully. Make it as plain or fancy as you like. The center front panel can be lacy, pintucked, or plain; the collar and cuffs can be embellished in many ways. Pattern includes instructions for drawn-thread work. **Suggested fabrics:** Lightweight fabrics such as gauze, batiste, voile, georgette, or other light cottons; silk, rayon, or blends.



#212 Five Frontier Shirts

Misses 8-16; Men's 36-46. \$19.95

Choose one of these traditional Western shirts for the cowboy or cowgirl in you, and sew up the five different variations for every day of the week: lace-front, square bib, shaped bib, contrast yoke, and traditional bull's-head yoke. Pattern includes historical information and instructions for piped trim and "smile" pockets. **Suggested fabrics:** Light to medium-weight fabrics such as chambray, cottons, silks, calico, corduroy, flannel, denim, wool.



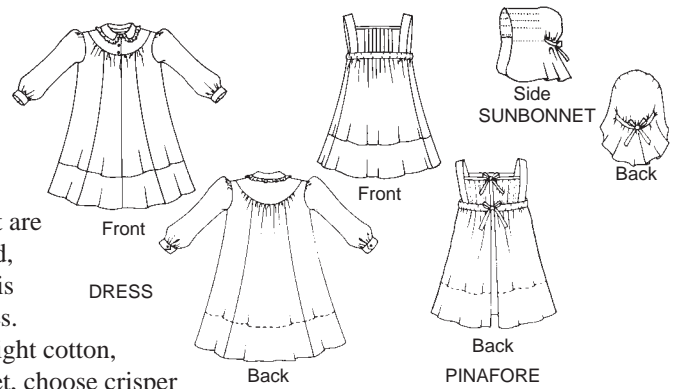


#213 Child's Prairie Dress & Pinafore

Girls 2-10. \$16.95

This dress is just like big sister #201 Prairie Dress, but with a sweet pinafore that fits over the dress instead of an apron. The Dress yoke and Pinafore front are perfect for tucked, embroidered, smocked, or beaded embellishment. Also included is a period Sunbonnet to protect tender faces.

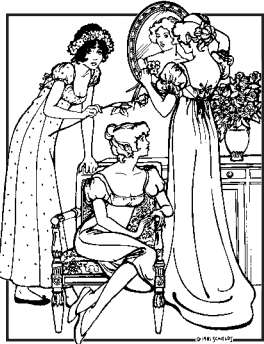
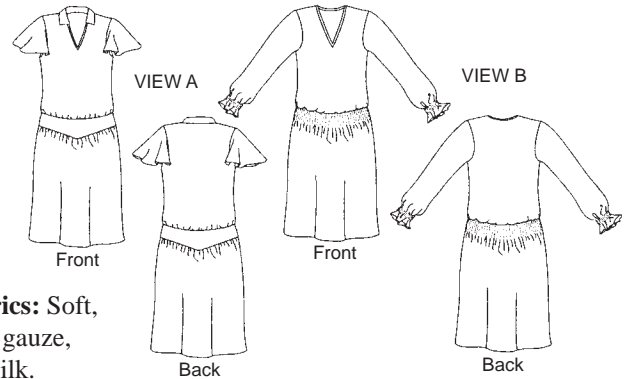
Suggested fabrics: Light to medium-weight cotton, rayon, wool, or blends. For the Sunbonnet, choose crisper fabrics in cotton or blends.



#214 1927 Tea Frock

Misses 8-14. \$16.95

The "Genuine Philippine Hand Embroidered" frocks of the 1920s were all the rage among women too busy to stitch. This easy-sew style features a flattering dropped waist and optional smocking. Pattern includes instructions for smocking and embroidery stitches, as well as a full-size embroidery design motif. **Suggested fabrics:** Soft, light to medium-weight fabrics such as cotton gauze, crepe, batiste, voile, georgette, rayon challis, silk.

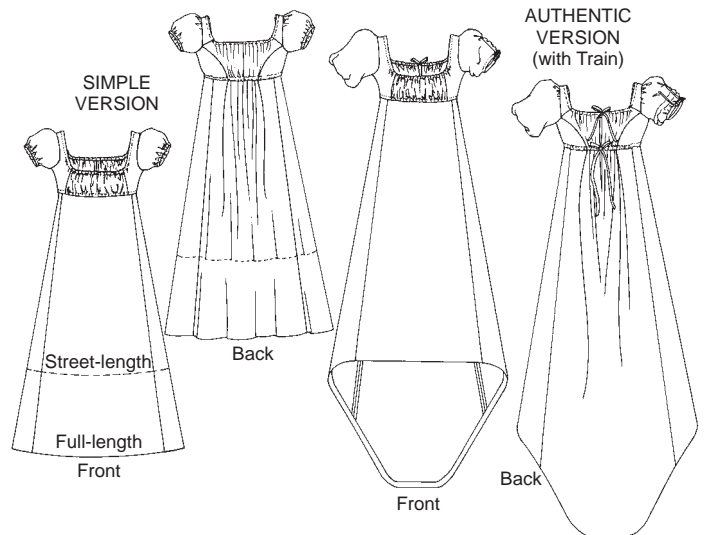


#215 Empire Dress

Misses 6-16. \$14.95

This high-waisted dress known today as "empire" was worn in the period following the French Revolution in the late 1700s. The revealing style, requiring few undergarments, reflected a desire to return to simpler, classical Grecian dress after the excesses of the European nobility. Narrow bodice is gathered into a skirt that is slim in front and full in back.

The optional full-length train and sleeve details make it perfect for a bridal fashion. **Suggested fabrics:** Soft, lightweight or medium-weight fabrics such as cotton gauze, batiste, dotted Swiss, rayon challis, silk, very lightweight silk velvet with drape.

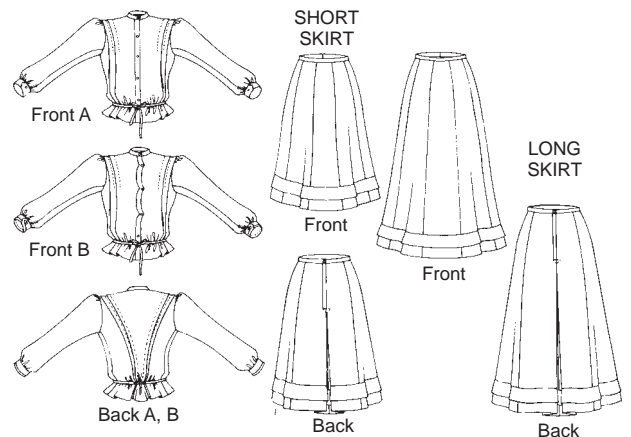


#216 Schoolmistress' Shirtwaist & Skirt

Misses 8-14. \$16.95

Based on the vintage uniform of the 19th century schoolmarm, this two-piece outfit features a classic "shirtwaist" or blouse with beautifully different scalloped front opening and flattering princess lines. Wear it with the sweeping seven-gore skirt with optional bias trim. **Suggested fabrics:** Light to medium-weight soft or crisp fabrics such as cotton

broadcloth, poplin, or denim; silk; linen; or blends. The Skirt can also be made from light to medium-weight wool, corduroy, or velveteen.

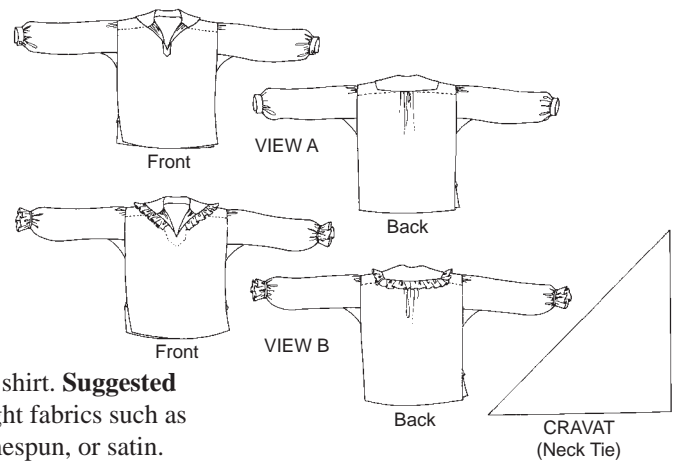




#217 Poet's Shirt

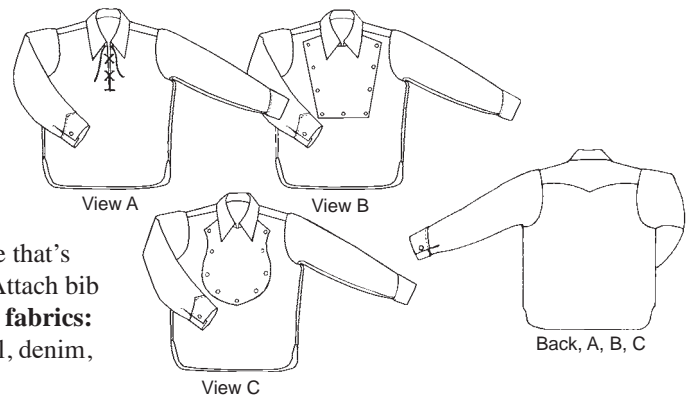
Misses 6-16; Men's 34-44. \$14.95
 This romantic shirt dates from the 1820s, when such poets as Byron, Shelley, and Keats wore their collars open in defiance of conventional fashion. The easy-sew garment is equally poetic for men or women and can be made with plain or ruffled collar and cuffs. Pattern includes historical lore and instructions for authentic detailing. This is a favorite

for men's Medieval/Renaissance costume and contemporary wedding shirt. **Suggested fabrics:** Light to medium-weight, soft or crisp shirting or blouse-weight fabrics such as cotton, linen, silk, or blends, in challis, crepe, batiste, broadcloth, homespun, or satin.



#218 Child's Frontier Shirt

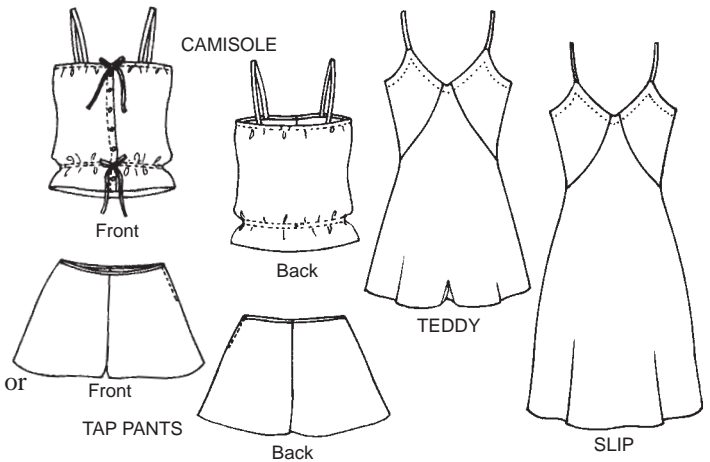
Child's 4-14. \$16.95
 For young boy and girl buckaroos, this classic Western shirt has three different looks: lace-up front (View A), Cavalry-style bib front (View B), or Fireman's bib front (View C). Shirt has pointed collar and shaped back yoke that's great for contrasting or pieced fabrics. Attach bib fronts with buttons or snaps. **Suggested fabrics:** Light to medium-weight cottons, flannel, denim, chambray, corduroy.



#219 Intimacies

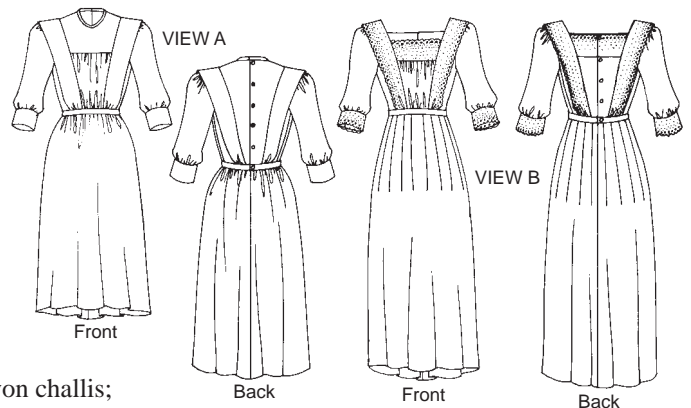
Misses 8-22. \$14.95
 This treasure chest of lingerie styles from the 1920s and 1930s includes a camisole, tap pants, bias teddy, and slip. Depending on fabric choice, they can be made for under-garment pleasure or sassy summer outerwear. Pattern includes instructions for lace appliqué, filet crochet lace, and decorative ribbon flowers. **Suggested**

fabrics: Lightweight, soft fabrics of silk, cotton, rayon, synthetics, or blends such as crepe, challis, batiste, voile, or satin.



#220 Garden Party Dress

Misses 8-14. \$14.95
 This pretty fashion from the post-Edwardian era of the early 1900s features flattering princess lines, high or low neckline, gathered or pleated skirt, and a variety of embellishment options. The center front panel, side flanges, and cuffs are all candidates for lacy detailing, color blocking, or inventive fabric treatments. **Suggested fabrics:** Soft, lightweight fabrics such as cotton batiste, voile, lawn, gauze, or eyelet; rayon challis; silks; wool challis, or blends.



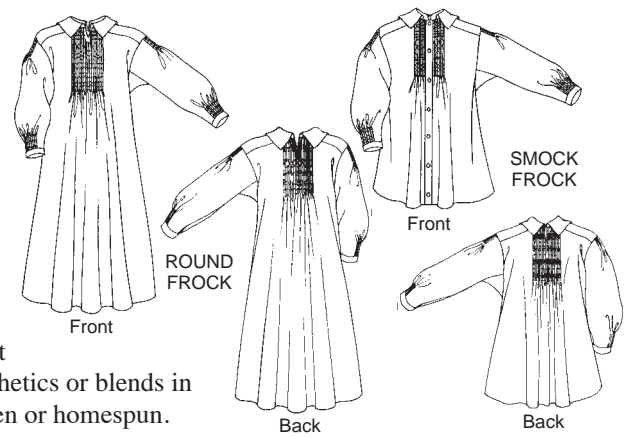


#221 English Smock

Children's 2-12; Misses 6-20;
Men's 30-42. \$16.95

A truly universal garment worn by shepherds, butchers, bakers, farmers, and other rural laborers in Old England. Today, smocks are favored by fashionable people everywhere and made out of every fabric imaginable. Long and short versions can be hand-smocked or "mock-smocked" by machine with elastic. **Suggested fabrics:** Soft

medium-weight fabrics with some drape such as cotton, rayon, wool, synthetics or blends in challis, broadcloth, corduroy, or flannel. For an authentic look, choose linen or homespun.

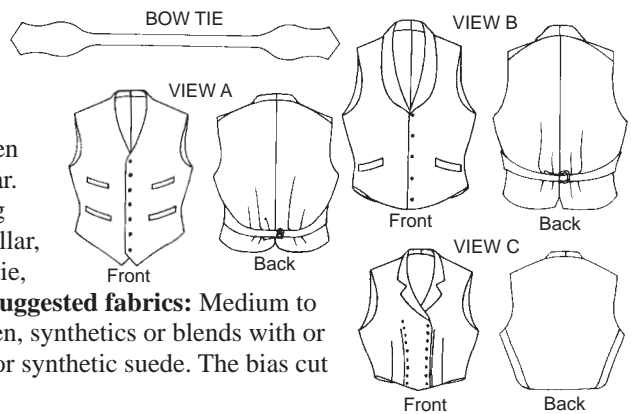


#222 Vintage Vests

Misses 6-16; Men's 36-44. \$16.95

Victorian gentlemen at the end of the 1800s needed a vest or waistcoat to be considered well-dressed, and smart Victorian women often paired vests with walking skirts for street wear. Our vests offer a variety of stylings, including collarless V-neck, bias-cut vest with shawl collar, and short front-darted style. Traditional bow tie, with instructions for tying, is also included. **Suggested fabrics:** Medium to heavyweight fabrics of cotton, silk, wool, linen, synthetics or blends with or

without nap, such as brocade, velvet, corduroy, canvas, piqué, velveteen, or synthetic suede. The bias cut of the shawl-collar vest is especially suitable for stripes or plaids.

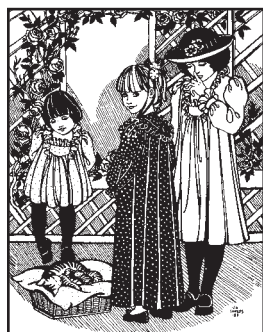
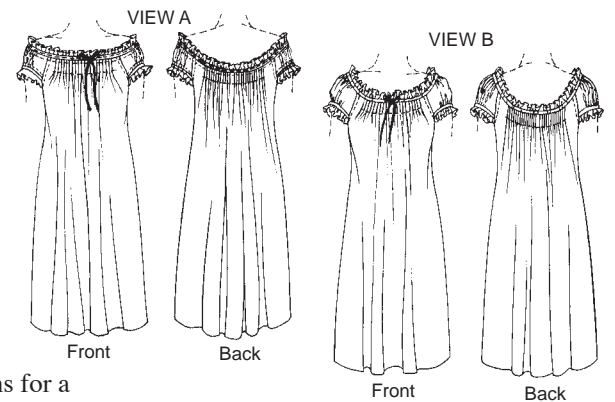


#223 A Lady's Chemise

Extra Small to 3X Large. \$16.95

Both versions of our flattering chemise have short gathered and ruffled cap sleeves. Delicate pleats accent the center front and back of the neckline, which is adjustable with ribbon drawstrings. The neckline of View A drops just off the shoulder and uses purchased eyelet beading and lace or eyelet ruffles at neckline and sleeve. The neckline of View B sits on the shoulder and features a self-fabric

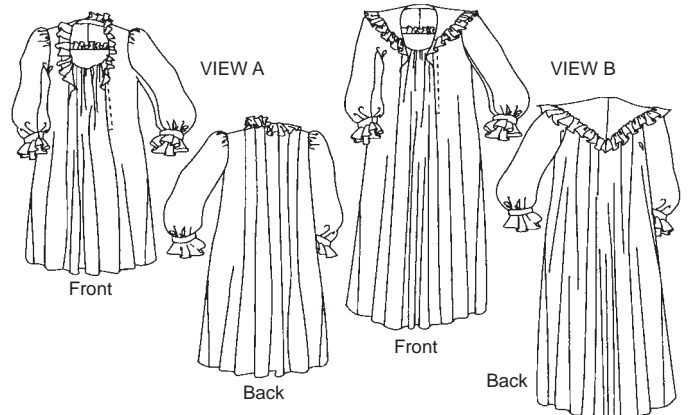
ruffle and casing for the ribbon drawstring. Instructions and alphabet designs for a Victorian monogram are included. **Suggested fabrics:** Lightweight cottons and blends such as batiste, lawn, voile, gauze, or eyelet; handkerchief linen; silks such as crepe de chine; rayon challis. Originals were made of lightweight muslin or linen.



#225 Childhood Dreams

Girls 2-12. \$14.95

For a special little girl, here's a scaled down version of a Victorian lady's favorite nightgown. An ideal children's style for daytime and special occasions, too. **Suggested fabrics:** Light to medium-weight cotton, linen, rayon, silk, or blends such as lawn, dotted Swiss, gauze, voile, muslin, challis, broadcloth, or flannel.

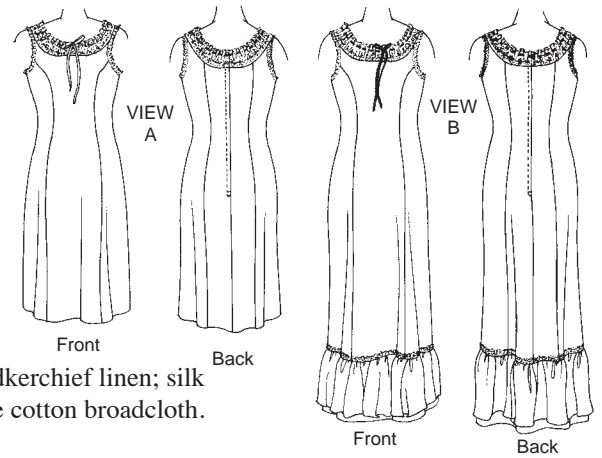




#226 Princess Slip

Misses 6-16. \$14.95

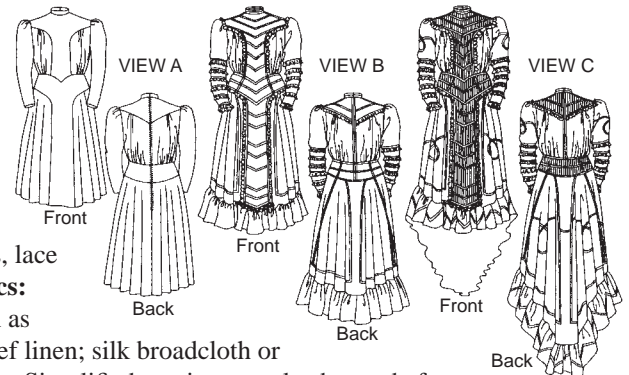
This sleek garment freed early 20th century women from traditional undergarments, which were both elaborate and constricting. Classic princess lines give this slip a smooth shape and flattering fit, whether worn underneath other garments or as a lightweight summer dress. A natural companion for #227 Edwardian Bridal Gown. **Suggested fabrics:** Light to medium-weight cotton and blends such as batiste, lawn, challis, eyelet, or broadcloth; rayon challis; handkerchief linen; silk broadcloth. Original garments were made of fine cotton broadcloth.



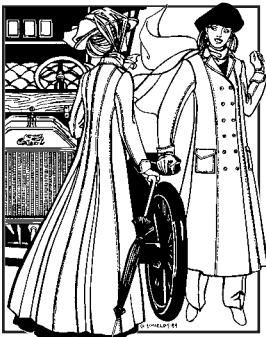
#227 Edwardian Bridal Gown

Misses 6-16. \$19.95

This is Edwardian charm at its best. A perfect vintage wedding dress with high neck, leg o' mutton sleeves, and flounced train. Simplified version can be a coordinated bridesmaid dress, dancing dress, or everyday fashion. Pattern includes instructions for tucks, lace insertions, and a simple veil. **Suggested fabrics:** Light to medium-weight cotton or blends such as batiste, lawn, voile, or broadcloth; handkerchief linen; silk broadcloth or



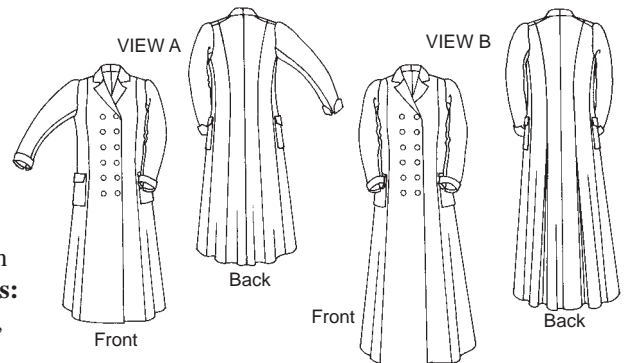
crepe de chine; satin; taffeta. Original garments were made of cotton batiste. Simplified version can also be made from rayon or wool challis. Stripes, plaids, one-way prints, or diagonals are not suitable.



#230 Model T Duster

Misses 8-16. \$16.95

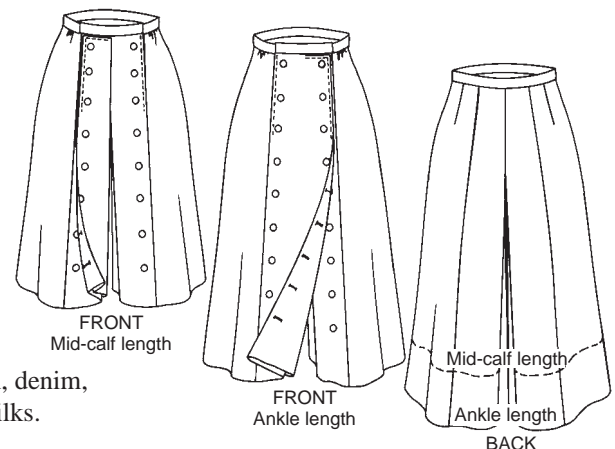
When early 20th century women began motoring across America in the new automobiles, they needed something to protect their fancy finery from the dust and grime of the rough roadways. The sensible and fashionable solution was this loose-fitting, unlined, Princess-seamed duster, which is still stylishly sleek today. **Suggested fabrics:** Heavyweight cotton or blends, such as poplin, corduroy, or denim; suit-weight linen; wool gabardine or blends; water-repellent fabrics.



#231 Big Sky Riding Skirt

Misses 8-18. \$16.95

Bring out the cowgirl in you! Equestrian women of the early 20th century, who were determined to ride astride rather than side-saddle, wore these divided skirts. An ingenious fashion, with front panel that buttons one way for a skirt and the other way for pants. Pattern is derived from a skirt worn by legendary rancher and rodeo rider, Fannie Sperry Steele. **Suggested fabrics:** Medium to heavyweight cottons and blends such as poplin, denim,



gabardine, corduroy; linen; light to medium-weight wools; suiting weight silks.



#233 Glamour Girl Dress

Misses 6-16. \$14.95

Glamour oozed in Hollywood in the 1930s and 1940s, and this is the daytime dress the starlets wore. It emphasizes curves, drapes elegantly, and lends an air of discreet sexiness. The close-fitting bodice is visually cinched in with front waistline ties, and fits smoothly into a flared skirt. Shoulder pads lend that commanding air to any aspiring celebrity. **Suggested fabrics:** Light to medium-weight fabrics with drape, such as silk or rayon crepe, satin, challis, soft cotton.

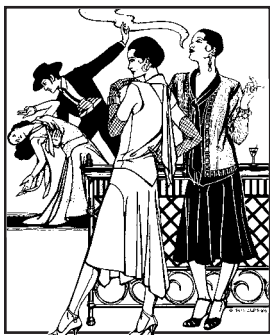


FRONT



BACK

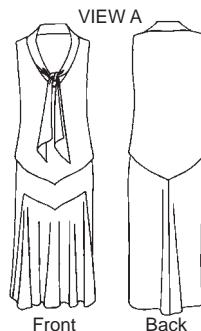
Knee length
Mid-calf length
Ankle length



#237 Tango Dress

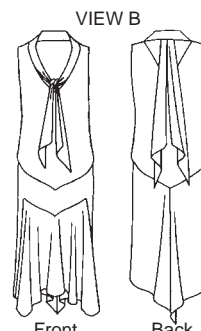
Misses 6-16. \$16.95

The tango craze swept the country in the 1920s, and the exotic dance required fashions that dipped and swayed with the music. This dramatic fashion has an optional shaped back hemline and draped scarf for sensuous movement. The dress can also be made more conservatively, and worn with a cardigan sweater (knitting instructions included). **Suggested fabrics:** Lightweight fabrics with drape, such as silk or polyester satin, charmeuse, crepe, challis, lightweight linen or cotton.



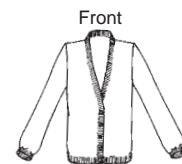
Front

Back



Front

Back



Front

SWEATER TO KNIT



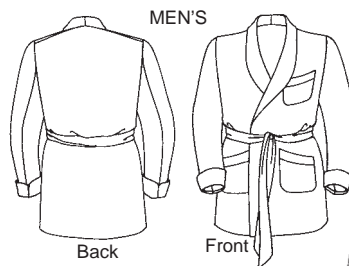
Back



#238 Le Smoking Jacket

Misses 6-16; Men's 34-44. \$16.95

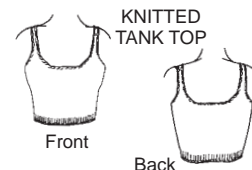
Smoking jackets symbolized sophistication during the 1920s and 1930s, both on the silver screen and in real life. Our classy version features contrasting or quilted lapels, cuffs, and pocket trim. Pattern includes instructions for women's knitted tank top to wear underneath. **Suggested fabrics:** Medium-weight fabrics such as velvet, velveteen, brocade, corduroy, crepe, silk jacquard.



MEN'S

Back

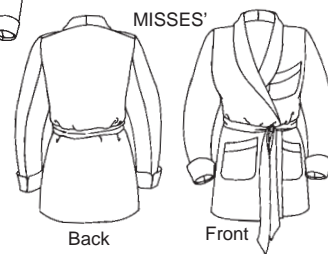
Front



KNITTED TANK TOP

Front

Back



MISSES'

Back

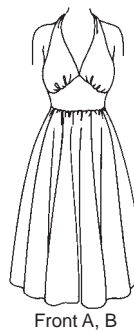
Front



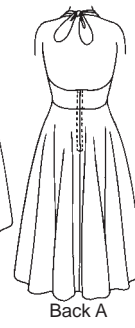
#239 Blonde Bombshell

Misses 6-16. \$16.95

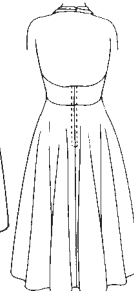
Celebrate your femininity in this full-skirted, dramatic style from the 1950s. Make it in colorful cotton for a summer sundress or shimmering brocade for an evening party any time of the year. Pattern includes instructions for knitted bolero sweater to wear on top. **Suggested fabrics:** Light to medium-weight fabrics such as cotton, silk, or blends.



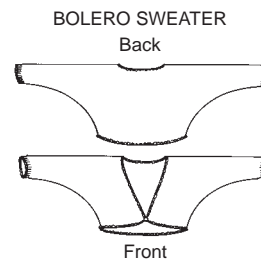
Front A, B



Back A



Back B



BOLERO SWEATER

Back

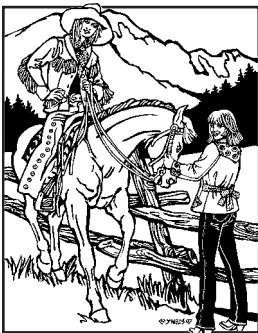
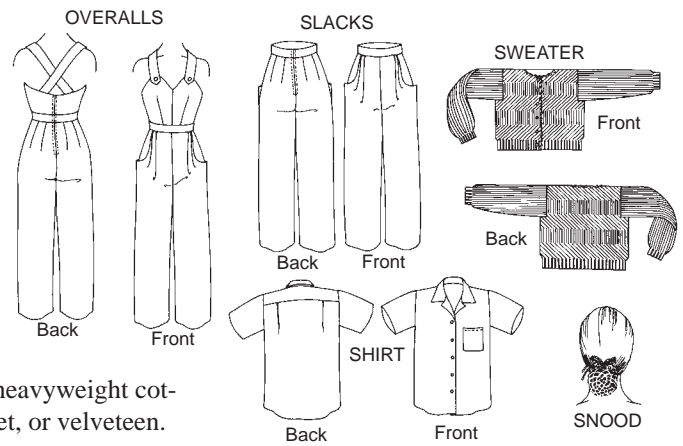
Front



#240 Rosie the Riveter

Misses 6-20. \$19.95

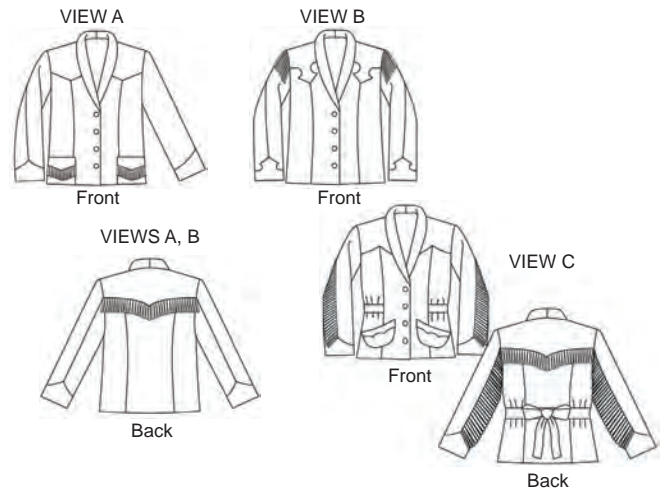
The heroic working women of World War II inspired this factory wardrobe of camp shirt, pleated slacks, and overalls with sweetheart bib. Pattern includes historical information and instructions for knitted sweater and crocheted snood that keeps hair in place. **Suggested fabrics:** For Shirt, choose medium-weight cotton, rayon, silk, or blends. For Slacks and Overalls, choose medium to heavyweight cotton, wool, blends, corduroy, denim, velvet, or velveteen.



#242 Rodeo Cowgirl Jacket

Misses Extra Small to 2X Large. \$19.95

This versatile unlined Jacket, adapted from vintage cowgirl costumes, features princess seams, shawl collar, and set-in sleeves. Pattern includes three shoulder yoke variations and two cuff yoke and pocket variations, as well as an optional belt. Add creative embellishments, from fringe and studs to embroidery and lace. **Suggested fabrics:** Denim, cotton, suede, leather, velvet, medium to heavyweight silk. For added interest, use contrasting fabric for yokes and purchased fringe for a Western look.



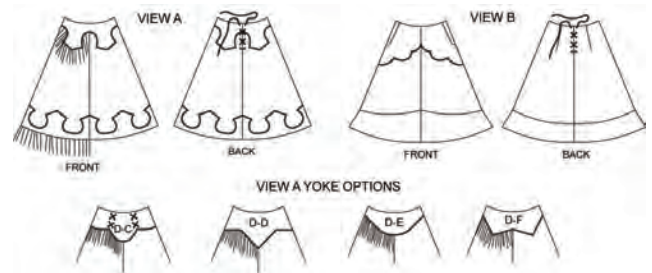
ton, suede, leather, velvet, medium to heavyweight silk. For added interest, use contrasting fabric for yokes and purchased fringe for a Western look.



#243 Rodeo Cowgirl Skirt

Misses Extra Small to 2X Large. \$19.95

This Western-styled skirt has lots of flair. Both views feature flared A-line silhouette, shaped and faced waistline, mid-calf length, and lace-up back closing. **View A** has shaped hem appliqué and several easy-to-apply hip yokes; **View B** has swishy hem flounce and hip/pocket yoke. Add fringe, studs, and embroidery for extra fun. **Suggested fabrics:** Denim, cotton, linen, suede, leather, lace, light to medium-weight silk. Consider contrasting fabrics for yokes.



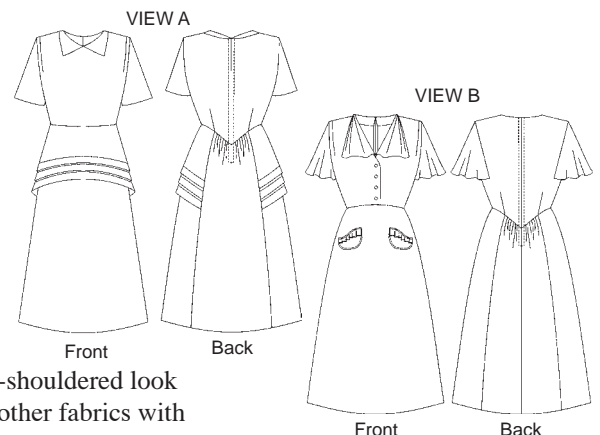
Denim, cotton, linen, suede, leather, lace, light to medium-weight silk. Consider contrasting fabrics for yokes.



#249 1930s Day Dress

Misses Extra Small to 3X-Large. \$19.95

Our 1930s Day Dress uses fabric economically, yet still looks chic and trendy. **View A** features round neck with collar points and peplum cleverly cut on the straight grain but with the slimming look of a bias cut. **View B** is more casual, with buttoned front, flounce collar and sleeves, and eyelash pockets. Both dresses have a flattering dropped waistline in back, back zipper, slightly flared skirt, and unpressed tucks



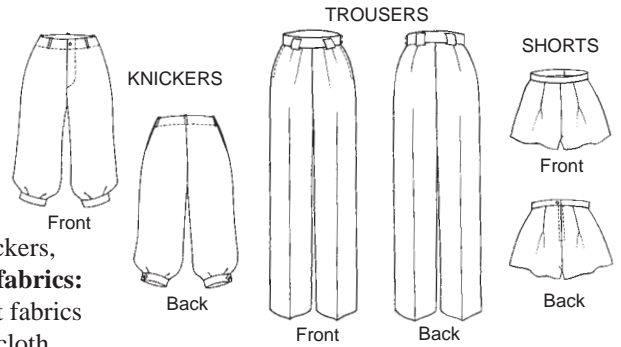
in front that eliminate the need for bust darts and create the fashionable broad-shouldered look of the period. **Suggested fabrics:** Rayon, medium-weight silk, microfiber, or other fabrics with drape. View B is particularly attractive in small-print fabrics with sheer flounces.



#250 Hollywood Pants

Misses 8-14. \$19.95

Movie stars Marlene Dietrich and Katharine Hepburn wore trousers with exceptional attitude before pants were socially acceptable, and made them essential components of every stylish woman's wardrobe. Our Hollywood-inspired styles include sporty knickers, classic trousers, and kicky shorts. **Suggested fabrics:** For Knickers, choose medium to heavyweight fabrics such as cotton, linen, wool or blends in broadcloth,



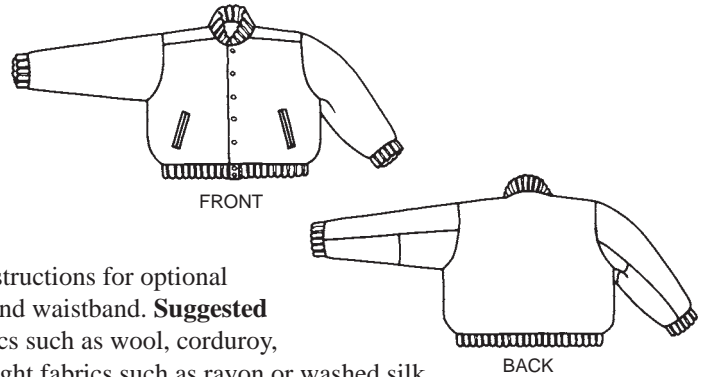
homespun, or twill; also napped fabrics such as corduroy and velveteen. For Trousers, choose medium-weight, soft fabrics with drape such as wool gabardine or challis; also cotton or corduroy. For Shorts, choose soft or slightly crisp, medium-weight fabrics such as wool challis, cotton, linen, rayon, or blends.



#251 Varsity Jacket

Misses and Men's XS, S, M, L. \$16.95

This classic 1950s sport jacket was coveted by all fashion-conscious Americans of the time. The traditional model featured a wool body with leather sleeves, but it looks just as great in sandwashed silk, corduroy, or ethnic print cotton. Pattern includes instructions for optional hand-knitted ribbing for cuffs, collar, and waistband. **Suggested fabrics:** Medium to heavyweight fabrics such as wool, corduroy,



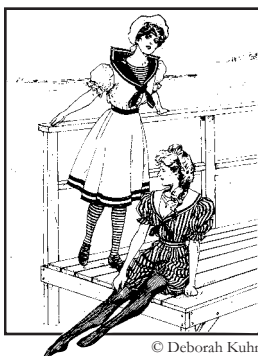
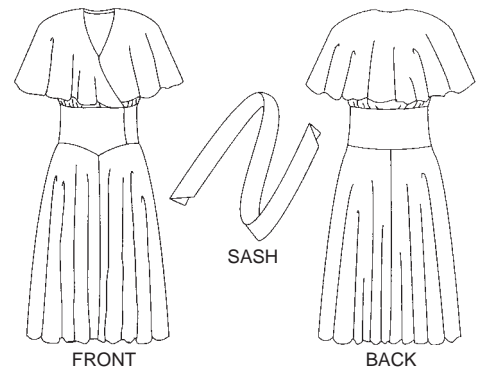
gabardine; heavyweight cotton; suede or leather. Also, summer-weight fabrics such as rayon or washed silk.



#252 Beach Pyjamas

Misses 6-20. \$16.95

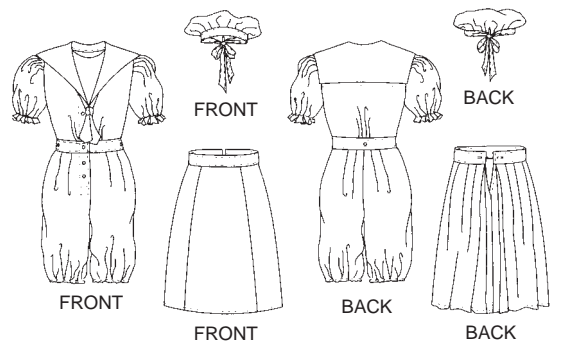
This casual, flowing style was the height of summer resort fashion in the 1920s and 1930s. Our one-piece version with carefree sash features a full shawl collar that wraps in front and falls gracefully over the shoulders in back. Wide palazzo pants give the appearance of a skirt. **Suggested fabrics:** Light to medium-weight fabrics with soft drape such as rayon, silk, or challis; also crisp, lightweight cotton or linen.



#253 Vintage Bathing Costume

Misses 6-20. \$19.95

In 1890, when women were just beginning to venture into the traditional men's sports arena, a bathing outfit could weigh as much as 20 pounds and cover up as much as full street dress. Our lighter-weight version features a knee-length gored skirt that buttons over a one-piece romper, topped off with a jaunty cap. **Suggested fabrics:** Medium-weight cottons, linens, blends. Original garments were made in light to medium-weight wools.

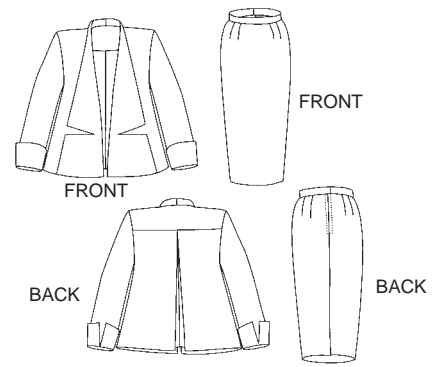




© Deborah Kuhn

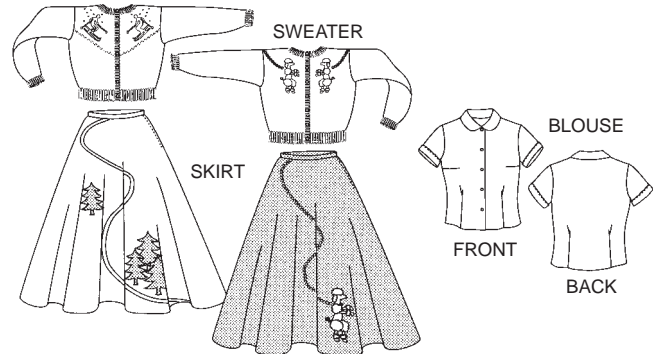
#255 Swing Suit

Misses Extra Small to Extra Large. \$19.95
 This classic 1950s silhouette has timeless appeal. The trapeze jacket's wide lapels are stitched down to form pockets. The pencil slim skirt provides a nice contrast to the jacket's fullness. **Suggested fabrics:** Medium-weight suiting fabrics with body such as wool, silk, knits, linen, or blends. Make Jacket lapels and cuffs from contrasting fabric or embellish them with machine embroidery.



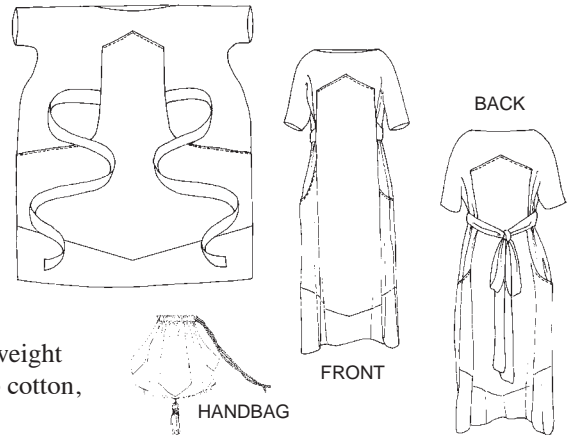
#256 At The Hop

Misses 6-20. Girls 4-14. \$19.95
 Bebop 1950s circle Skirt, Blouse, and knitted Sweater for women and young girls. Poodle and alpine appliqué designs included. **Suggested fabrics:** For Skirt, felt (the traditional choice), cotton, rayon, wool gabardine, blends. For Blouse, light to medium-weight cotton, silk, rayon, blends.



#261 Paris Promenade Dress

Misses Extra Small to Extra Large. \$16.95
 Easy-to-sew, easy-to-wear pullover dress from about 1920 is attached to bib-shaped overdress, then shaped at the waist by a self-fabric sash or purchased decorative cord. Vintage-style drawstring handbag completes the look. Pattern includes instructions for decorative tassels at ends of dress sleeves and bottom of handbag. **Suggested fabrics:** Light to medium-weight fabrics with drape, such as silk, silk velvet, rayon, featherweight

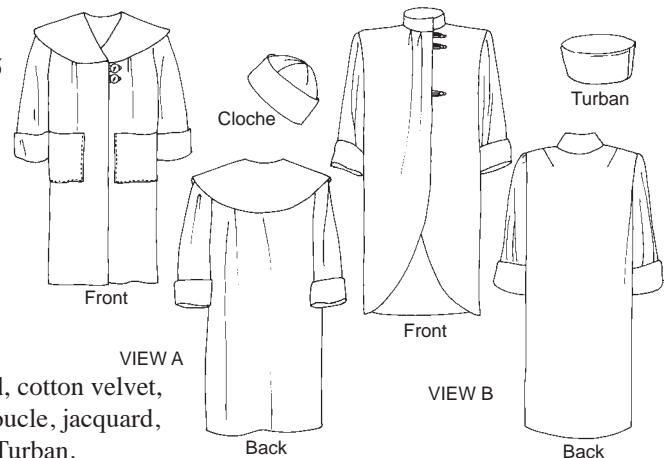


cotton, or jersey. For a more defined look, fabrics with more body, such as crisp cotton, lightweight linen, and silk taffeta.



#262 Spectator Coat

Misses Extra Small to Extra Large. \$22.95
 Slenderizing coats feature the classic 1920s' straight-sided silhouette. Cape-Collar Coat with large patch pockets provides ample space for creative embellishment, with Cloche hat decorated to match. Stand-Up Collar Coat has two soft pleats in front, shaped hem, and coordinating Turban. Both coats are fully lined.



Suggested fabrics: For Cape-Collar Coat and Cloche, heavyweight silk twill, medium to heavyweight wool, cotton velvet, boucle, corduroy. For Stand-Up Collar Coat, heavyweight silk twill, boucle, jacquard, wool, velvet, microfiber; also faux fur, boiled wool, suede, leather for Turban.

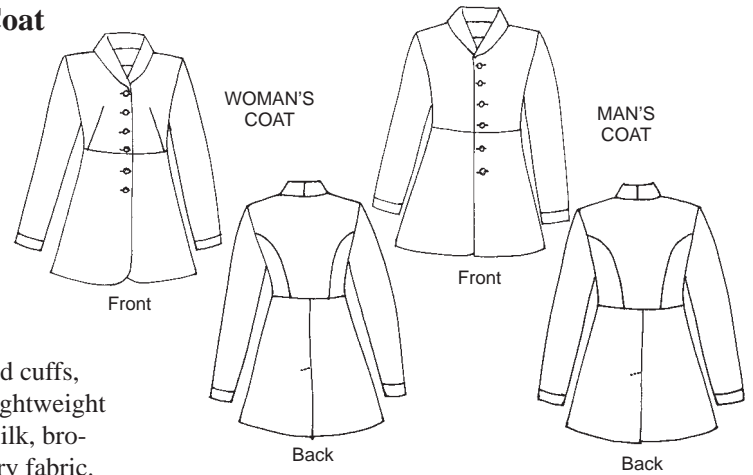


#263 Countryside Frock Coat

Misses Extra Small through Extra Large; Men's Small through 2X Large. \$19.95

Perfect choice for historical military or Western reenactment, as well as an elegant contemporary look. Single-breasted unlined coat features shawl collar, princess seams in back, waist darts in front (woman's coat

only), slightly lowered waistline, long narrow sleeves with band cuffs, and above-knee peplum with back vent. **Suggested fabrics:** Lightweight denim or canvas, light- to medium-weight wool, linen, hemp, silk, brocade, velveteen, leather, suede, prewashed tapestry or upholstery fabric.

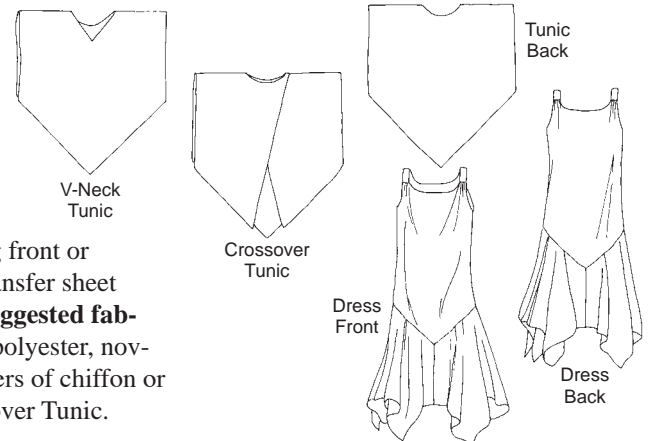


#264 Monte Carlo Dress

Misses Extra Small to Extra Large. \$19.95

This sleek dress in the 1920s "flapper" style has two coordinating tunic tops for a versatile ensemble of garments. Drop-waist dress with narrow straps and shaped handkerchief hem. Simple-sew pullover and crossover tunic tops can be worn facing front or back, belted or not. Pattern includes heat transfer sheet of vintage design motifs for embroidery. **Suggested fabrics:** Lightweight and/or sheer silk, rayon, polyester, novelty velvet, jacquard, or brocade. Dress skirt is attractive in multiple layers of chiffon or georgette. Sheer striped fabrics create a nice graphic effect in the Crossover Tunic.

Lightweight and/or sheer silk, rayon, polyester, novelty velvet, jacquard, or brocade. Dress skirt is attractive in multiple layers of chiffon or georgette. Sheer striped fabrics create a nice graphic effect in the Crossover Tunic.

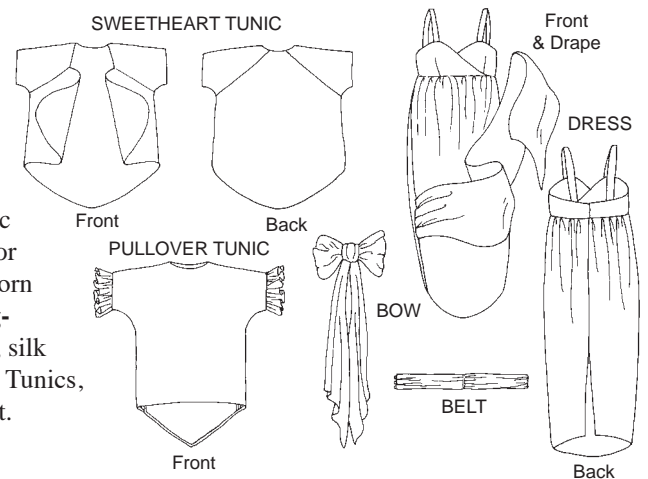


#265 Afternoon Tea Dress

Misses Extra Small to Extra Large. \$19.95

Inspired by the Edwardian tea gowns of 1912-1913, this Dress features an optional drape that is arranged at center front and held in place with the Shirred Belt; Bow can be attached at front or back. Sweetheart Tunic wraps in front and is held in place with Belt or Bow; ruffled-sleeve Pullover Tunic can be worn front or back, belted or hanging straight. **Suggested fabrics:** For Dress, Drape, Belt, Bow, silk

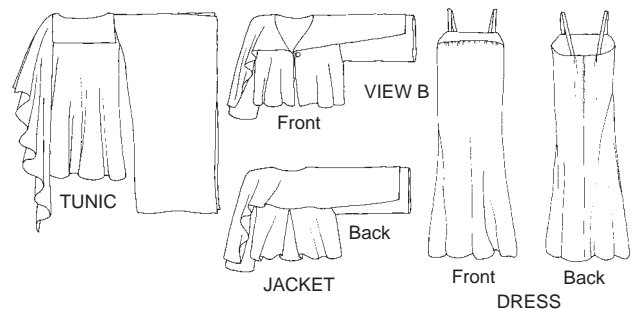
or polyester satin, brocade, jacquard; lightweight silk or rayon velvet. For Tunics, lightweight and/or sheer cotton, silk, rayon, polyester; lace; novelty velvet.



#266 Greek Island Dress

Misses Extra Small to Extra Large. \$19.95

Free-flowing Dress is an easy-sew sheath with plain yoke that is perfect for embellishment. Jacket has a center back godet to add flare, extended collar, and single-button front closure. Simple Tunic has a sailor collar and free-floating sleeve panels. **Suggested fabrics:** For Dress, silk or polyester crepe de chine or charmeuse. For Tunic and Jacket, soft, filmy fabrics such as chiffon, georgette, gauze, voile, novelty cut velvet.

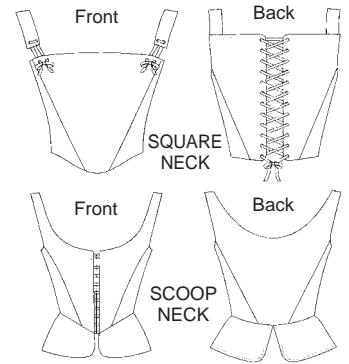




#267 M'Lady's Corset

Misses Extra Small to 3X Large. \$16.95

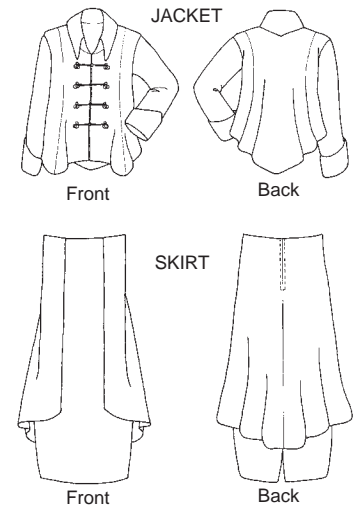
Two corsets representative of late 16th-century and early 17th-century garments worn in the royal courts and in daily peasant life. Square-neck corset laces in back with purchased or handmade eyelets. Scoop-neck corset fastens in front with purchased hook-and-eye tape, and has a peplum like the waistline tabs of 16th-century doublets. Both versions feature Elizabethan-era dropped front waist. **Suggested fabrics:** For outer layer, medium to heavyweight stable fabrics that do not drape, such as silk, satin, brocade, damask, shantung, dupioni; cotton damask, brocade; linens and blends. For lining, same as outer layer or slightly lighter-weight equivalent. For supporting inner layers, see pattern.



#268 Metropolitan Suit

Misses Small to 3X Large. \$24.95

This 1914 suit reflects the military style of World War I uniforms. Jacket features softly flared silhouette, tall rollover collar, turn-back cuffs, and front closing with purchased frogs. Skirt is slightly hobbled with center back slit for ease of walking. Overskirt attaches at raised waist edge and drapes attractively at back hem. Top off with **#269 Metropolitan Hat** for complete mid-1910s ensemble or pair Skirt with **#270 Metro Middy Blouse** for breezy seaside look. **Suggested fabrics:** Lightweight wools and wool blends; suit-weight silks; medium-to-heavyweight rayons. For more structured look, use cottons or linens.

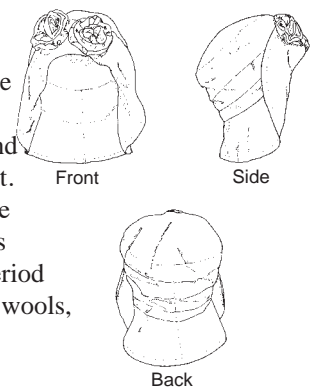


#269 Metropolitan Hat

Women's Small, Medium, Large Hat Sizes. \$12.95

This hat represents a transitional period in millinery history—following the oversize Victorian confections of veiling and stuffed birds, but before the head-hugging cloches of the 1920s. Fast and easy to sew, it has a casual and slightly slouchy look, with a modest brim and fabric flowers at center front. There are just three pattern pieces: Brim, Band, and Crown. The decorative fabric Rosettes can be fashioned out of the hat fabric, contrasting materials

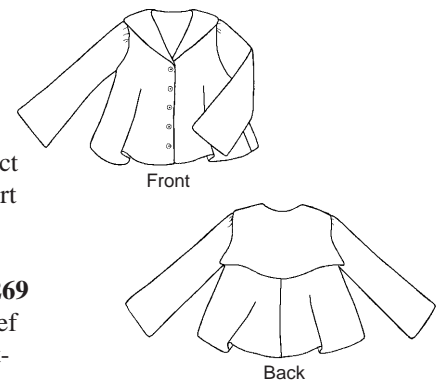
such as lace, tulle, or glittering silk, or entirely replaced by a vintage brooch or dramatic button. For period look, wear with **#268 Metropolitan Suit** and **#270 Metro Middy Blouse**. **Suggested fabrics:** Linens, wools, silks, medium-weight cottons, denim, corduroy, fleece.

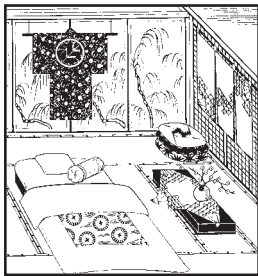


#270 Metro Middy Blouse

Misses Extra Small to 3X Large. \$16.95

Easy-sew blouse from pre-World War I era features a breezy, loose fit; slightly belled sleeves; flared hemline with gentle downward curve at center back; V-neck, and sailor collar. Perfect for a summer blouse tucked into **#209 Walking Skirt** or the skirt from **#268 Metropolitan Suit**. Or wear as a lightweight jacket over feminine camisole. To complete the period look, stitch Art Nouveau embroidery motifs around the collar and wear with **#269 Metropolitan Hat**. **Suggested fabrics:** For blouse, handkerchief linen, lightweight cotton or silk. For jacket, medium-weight cotton, silk, or linen; lightweight or tropical-weight wool.



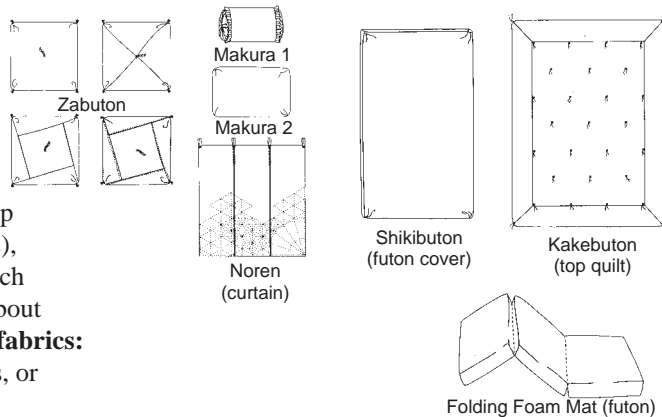


#305 A Japanese Interior

\$19.95

This collection of traditional Japanese pieces can be tastefully incorporated into any decorating scheme. Pattern includes floor cushions (*zabuton*), sleeping pillows (*makura*), futon, futon cover (*shikibuton*), top quilt (*kakebuton*), decorative curtains (*noren*), and tips for adapting any kimono pattern (such

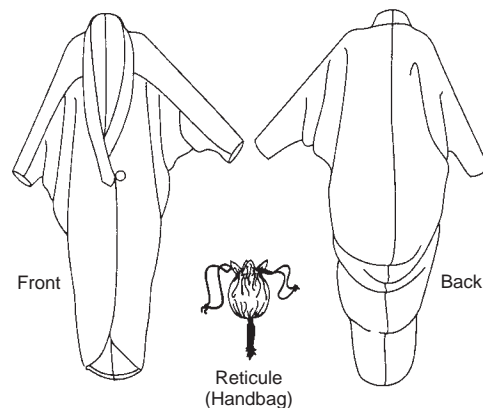
as Folkwear #113) for a quilted sleeping kimono (*yogi*). Information about traditional handwork and dyeing techniques also included. **Suggested fabrics:** For Cushions and Futon Covers, medium to heavyweight cottons, silks, or blends. For Noren, light to medium-weight cottons, silks, or blends.



#503 Poiret Cocoon Coat

Misses Extra Small to Extra Large. \$19.95

This fully-lined Cocoon Coat was designed around 1913-1919 by Paul Poiret, a renowned early 20th century designer. It features bat wing sleeves, one-piece front/back body, neckband, and hobble skirt. The easy-sew Reticule (drawstring bag), typical of the same period, is fully lined and closes with decorative cording; it is embellished with a tassel that hangs from the bottom. **Suggested fabrics:** For Coat, medium- to heavyweight fabrics with drape, such as velvet, silk charmeuse, heavy rayon, or jersey. For Reticule, same as for Coat, also satin and blends. For Linings, satin or blends with similar drape and weight to outer fabric.



#508 Traveling Suit

Misses 6-20. \$22.95

This sophisticated World War I era outfit was made in New York and was probably a copy of a trendy Paris fashion. The military-styled Jacket features Princess seams, shaped waistline, and below-hip peplum. The high stand collar has an optional contrast overcollar; decorative insets adorn the cuffs. The Jumper has a plunging V-neck in front and back, shoulder pleats, waist-shaping tucks, and decorative buckle at center front.

Suggested fabrics: Suiting weight linen, gabardine, or silk; lightweight wool and blends; heavyweight cotton twill. Optional overcollar of light- to medium-weight silk, cotton, or linen.

